

March 2011

March 2011

www.mapua.gen.nz

Coastal News

email: coastalnews@mapua.gen.nz

covering Mapua & Ruby Bay,
run by volunteers

Invitation to Concept Presentation

The Mapua Hall Committee would like to invite friends and all interested members of the community to the formal presentation of the Concept Plan for the hall design and upgrade at 5.30pm, Wednesday 6th April at the hall.

Wine and nibbles will be served on arrival and an opportunity to view the concept draft before the presentation at 6pm. A donation box will be placed at the door and contributions towards costs will be both welcomed and appreciated. (Fund-raising amounts to approximately 20% of the overall renovation costs).

Currently the committee is meeting twice a month with a lot of activity between these meetings. Bridget Wild and Jo McFarlane have been co-opted to the development sub-committee to help in the continuing research, exchange of information and liaison with the general public. Regular hall users and members of the community with appropriate expertise, are being consulted for the detailed analysis of all the hall spaces including:

- Current activities in each space
- Potential future activities in each space
- Design adjustments to meet future requirements
- Features required in the future
- Equipment needed
- Safety concerns

Other points to mention: The Hall Committee has now taken over the Sunday Market with plans to extend and broaden the scope next season and would like to thank Karen for looking after the market for the remainder of this season.

There is now an updated rental schedule to include an hourly rate. This will allow more time for activities than the previous rental periods of morning, afternoon

and evenings. New schedules are available now at VideoEzy along with any booking enquiries.

We hope to see you at the presentation on the 6th April and a further update on hall happenings will be printed in the April edition of the *Coastal News*.

Jo McFarlane, Mapua Hall Committee

Chair resigns

Devin Gallagher has resigned his position as acting chair for the Mapua & Districts Community Association, having diligently served three years as chair and the last six months as acting chair.

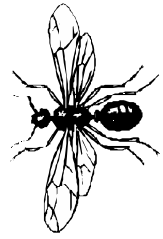
Devin's leadership and subtle skills of delegation and involvement has raised the benchmark by engaging both Tasman District Council staff and the community in moving forward many projects of great importance to our district. I know I can speak on behalf of the executive and members of its sub-committees in thanking Devin for his guidance, involvement and enthusiasm for all things community.

However, the good news is that Devin will stay on as a member of the executive committee and the reins will pass to another chair, yet to be selected.

Pam Stinton, secretary

Edited by Andrew Earlam (advertising) 540-2845, Terry Smith (editorial) 540-3203, and compiled by Barbara Mercer, 540-3022. Views expressed are not necessarily those of the editors. We aim to have the newsletter out by the 1st of the month. Deadline for paper copy at the Mapua Store and e-mailed items (preferred) to coastalnews@mapua.gen.nz is the 20th of the month. Small ads are by gold coin donation in the collection boxes, club notices free. Printed by the Tasman District Council.

Mosquito problem easily fixed



Plagued by mosquitoes this summer? Coming up in decorative red lumps? The answer may be closer than you think.

Mozzies love sewage. An Australian health report says, “Nutrient-rich sewage and sewage effluent has the capacity to produce enormous numbers of mosquitoes.”

They’re not kidding.

When I lifted the lid on our sewage plant the other day, the chamber was filled with hundreds of thousands of mosquitoes. A series of long blasts with the fly-spray dealt with that, and that evening we no longer experienced the buzzing, biting, fluttering problems of previous weeks.

We passed the information on to a neighbour, who was pretty confident his sewage set-up was OK. But when he checked—mozzies in their hundreds of thousands.

The brown house mosquito, along with others, usually breeds in organically polluted water near human communities. It is found breeding in vast numbers in unsealed septic tanks and the now common packaged small sewage systems. The females rarely travel more than 2km from their breeding sites, and usually a lot less. If you’ve got a mozzie problem, the source is probably not far away.

The females, incidentally, are the ones that are silent...and the ones that bite. The noisy zizzing males that flit around your head in bed are pests, but are not the biters.

Mosquito-breeding in septic tanks and small systems depends entirely on the pests getting into

the tank, usually through damaged or missing tank tops and inspection manholes, or through unscreened vents.

In our case, one concrete lid was cracked in two, and the other was a bad fit, and in any event rested on an edge that had been damaged when the tank was installed...plenty of space for mosquitoes to get in.

Of course another problem can lie in the disposal of the treated effluent. If it is gathering in small puddles rather than soaking quickly into the ground, you have just given the mozzies another pleasant breeding ground.

Septic tanks that overflow, or absorption trenches that are faulty or in waterlogged soil, can cause pooling of untreated or partially treated sewage that will then be a prolific source of mozzies.

The close-fitting inspection covers of fibreglass septic tanks are less likely to provide mosquito access than concrete prefabricated tanks, according to the Australian experts. Concrete tanks with a flat concrete top slab invariably have a small space between the top slab and the tank walls that is enough to let mosquitoes get in, they say. Damaged lids or inspection covers can also let the mozzies in.

Concrete tank tops and inspection manholes can be simply mosquito-proofed by applying a sand and cement mixture or a silicone sealant to all joints. You may get away with covering the tank top under the concrete lid with a sheet of heavy plastic. All vents to septic tanks should be screened with an insect mesh to stop mosquitoes getting in.

Mozzies don’t like moving water. If you have a water feature, keeping the water moving often will keep the mozzies away.

Check any lying water around the house—in saucers under pot plants, in uneven house guttering, in old buckets or pots behind the shed, old tyres lying anywhere. Any area of lying water, no matter how small, provides a potential mozzie home.

Anton Petre

Garden Notes

Here we are in the first month of autumn. I wonder what the weather will do this month. Hot as February I wonder, Hot sunny days make gardening very hard to deal with.

Mulching has helped a little but you can't beat water to keep plants alive and free of stress, especially in the vegie patch where if you have raised beds then drainage will be good, but does not retain moisture for any length of time.

And now of course is the time to plant all vegies for the winter season, be it cabbages, brussel sprouts, cauliflowers and others of your choice. Water restrictions make it harder, plus paying for our water does not help, thinking of those meters ticking away the dollars.

Now is the time to think about putting in a water tank, as we have done. This is a great help, but still not quite enough to meet all our needs as we are getting low now. We have two which collectively hold 10,000 litres. Ideally we need another 5000-litre tank and this would be adequate on a 750m section, watering every second day.

March sees the beginning of the bulb season, mainly anemones, ranunculus, and later irises, daffodils and tulips. Tulips are making a big comeback with many gorgeous colours which are rich and vibrant—those deep reds, apricots, yellows and purples.

There are not a lot of tasks for March until near the end of the month when the weather cools a little and bulb planting gets under way in earnest.

We in the garden club have been blessed to be able to purchase daffodil bulbs not too far away which are absolutely beautiful, both doubles and singles, rich in colours, many of show quality. The pleasing thing about bulbs is that they are there for many years to come and multiply over time and can be shared with friends.

With watering in the evenings there is a danger of mildew attack, so it is better to water in the early mornings to avoid this, one can use Saprol to combat. Also thrips are out there and Gild is the one to use for this.

Well, until next month happy gardening.

Barry Highsted

Animal Health File

Dr. Paula Short, Tasman Bay Vets, 69 Aranui Road, Mapua, ph 540-2329

Selenium Deficiency in Horses

Selenium deficiency has become a hot topic in the horse world lately due to the discontinuation of the main product used to supplement New Zealand horses. Fortunately another manufacturer has stepped in to fill the void, but it has certainly reminded us of the value of selenium supplementation.

Selenium is a mineral that is an essential component of an enzyme called Glutathione Peroxidase. This enzyme is an antioxidant which helps protect the cells of the body from damage from the free radicals which are waste products of cell metabolism. It is well known that most New Zealand soils are deficient in selenium and so in most areas supplementation of horses with 1-3mg of selenium daily is recommended to prevent selenium deficiency. Selenium deficiency can lead to White Muscle Disease, which causes damage to the skeletal muscles, and is more common in foals. Selenium-deficient horses are prone to tying up and can also have fertility problems.

Acute selenium toxicity occurs when too much selenium is ingested in a short period of time. Symptoms include blindness, head pressing, colic, diarrhoea, increased heart and respiratory rates, lethargy and eventually death. Chronic selenium toxicity is caused by long term overdosing and is characterised weight loss, loss of hair from the mane and tail and a cracking of the hoof wall around the coronary band causing the affected horse to become lame.



Due to the risk of selenium toxicity it pays to be careful when supplementing selenium. We recommend performing a blood test to ascertain blood selenium levels before starting any supplementation programme. If the horse is very low in selenium then follow-up blood tests will be required until the selenium level comes into the normal range. Horses should then be blood tested annually to ensure their selenium levels are remaining within the normal range.

There are many ways of supplementing selenium. Often farmers apply selenium fertiliser prills to the ground. When this has been done it is very important not to use any other selenised product without doing blood tests first. Injections can also be given to get a very deficient horse's levels up quickly and this is often combined with a vitamin E injection. Most commonly though selenium is supplemented in a liquid form such as Selmitt 1 (now called Selenium 1mg) given once a week or once a month or as a powder which is added to hard feed daily (eg, Selplus, Selevite extra). Many commercially prepared horse feeds now have selenium added to them as well but we have found that you do need to be careful with these products, as often the horse is not ingesting enough of the product to get the minimum daily amount of selenium required for good health.

Mapua School

Information Technology in the Classroom

Computers have changed the way we communicate with each other, discuss issues, share ideas and learn. At Mapua School we are fortunate to have IT resources in each classroom which enhance the learning opportunities for our students and teaching methods of our staff.

With funds raised by the PTA, classrooms are fitted with wall-size interactive screens and projectors. Laptops, funded by the BOT, are connected so that groups or individuals can share their work with the class. Teachers use them to introduce new projects, explain a new concept or explore sites on the Web.

Technology has also changed the way parents receive updates and information from the school. The weekly school newsletter arrives electronically each Thursday. On Sunday evenings, our family receives the following weeks' learning objectives, homework tasks, spelling words and hints for study.

My son challenges himself, his classmates and children from around the world as he hones his mathematical skills via Mathletics. This website also allows his teacher to review his progress as well as understand his strengths and learning opportunities. As parents, we are thrilled to be able to monitor his progress and be able to assist him as required with his learning. For the first time maths homework has become a selected choice – not an “Oh Mummm”!

Technology will never and should never replace the learning relationships between students and their teachers. It can, however, be one more resource to help our children “Be All they Can”

For someone who typed their final thesis on an electric typewriter – my, how things have changed.

Learning to Be All I Can, Lisa Dunn, Trustee

Mahana School

Written by Hannah Gale, Alisha Olney and Carolynne Gordon

Mahana School went to Rabbit Island for a school picnic which began with a tour around to explore the picnic area, before heading to the beach for a group sand sculpture competition. Amongst the sculptures made were a car which you could sit in, a frog, and a Joan of Arc stick formation. The work was done by groups of buddies working together, so that they could get to know each other better.

After their sand work, the students went for a swim in the water which was calm, and warm, playing freely. After the swim, students had age-group sand races, in a surf life-saving-style event, where they had to start lying face-down on the sand, facing away from the finish line, which was littered with wooden sticks that students had to run to and grab. Anyone who fell short of a stick was eliminated until there was a winner.

Due to the increase in popularity of riding bikes, Senior Constable Gerry Tonkin of Motueka Police visited Mahana School for one week to teach cycling safety. This was held for year three and over. Some of the things that he covered were road safety, cycling skills and potential hazards. The programme was suspended for one day so he could rescue a lost tramper.

There was a change to the names of the school classrooms this year, so instead of being called the junior, middle, and senior rooms, they have been given names of Maori birds. These are Piwakwaka for the junior room (meaning fantail), Kereru for the middle room (meaning wood pigeon), and the senior room has been named Kotuku (meaning white heron).

The teacher for Kereru, Mrs Carolyn Scorrar, has returned from maternity leave. Welcome back. Welcome also to Heidi Stephens and Max Floyd who have just started school, and Wednesday Sheedy and Christopher Davis in Kereru, and Lilly-Mae Salmond and William Davis in Kotuku—all new students to Mahana.

High Places

Our “No-one does it better” trips in 2011!!

SIKKIM: High Circuit towards Kanchenjunga (22 days) is a high and rewarding trek in colourful Sikkim in the Indian Himalayas towards Kanchenjunga (8598m). Begin with an overnight train ride ‘the Darjeeling Mail’ from Kolkata towards the Himalayas...recover in Darjeeling. **Departs 10 Apr ‘11, \$3620 ex Kolkata (Calcutta)**

Led by ‘the Moutere’s own’ Jenny Leith – 4 places left! Enquire for ‘last minute’ discount!

Or join our Post-Monsoon departure . **Departs 9 Oct ‘11, \$3620 ex Kolkata**

ICELAND: Contrasts (14 days) Our classic trip visits three of the most wildly contrasting and beautiful parts of Iceland with fjords, mountains, volcanoes, glaciers, lava deserts and oases, waterfalls, canyons, crater lakes and geothermal areas. **Departs 18 July ‘11, \$3990 ex Reykjavik**

Led by ‘Nelson’s own Icelandic speaking Andy Dennis!

GREENLAND: Wild Walks (14 days) We hike around iceberg-laden fjords and reach memorable high points with views of the Polar Stream and endless Arctic peaks to the north. **Departs 8 Aug ’11, \$4090 ex Reykjavik**

Led by Mapua’s own Greenland tramper Mary Lancaster

PERU: Circuit of the Cordillera Huayhuash (22 days) Sixteen days of trekking, above 4000m for nearly the whole time. It is simply one of the great walks of the world. **Departs 25 June ’11, \$3590 ex Lima**

PATAGONIA: High Andes of Patagonia (20 days) We trek and hike in two of the most magnificent mountain areas in the world, around the immense rock towers and icefalls of Paine and Fitzroy. **Departs 13 Nov – 2 Dec ’11 and 6 - 23 Feb ’12 ex El Calafate \$5500**

High Places, 97 Seaton Valley Rd,
Mapua

See our website for detailed ‘Trip Notes’
www.highplaces.co.nz

Ph: 540 3208 E: treks@highplaces.co.nz
Or Call in to see us!

MAPUA Bowling Club

Monday night League bowls is well under way and is proving very popular. There was a full field of eight rinks at our last evening’s event. Our thanks go to Don and Vicki Sixtus for their on-going organisation and support for our club.

Many thanks to Super Liquor for their sponsorship of our recent Fruitgrowers Drawn Triples. This tournament was keenly contested and was won by a Ngawhatu-skipped team.

Our green is now in excellent playing order and we welcome anyone who would like to visit our club as prospective members. Come and “have a go” – bowls, coaching, and a very friendly welcome are always available.

Maurie Daubney.

Police Report

The fruit season has started and is in full swing now. As happens most seasons there are a few dishonest workers and we have noticed an increase in theft complaints. During the evening of 18-19 February three fires were lit in Aranui Road between 2am and 3am. A New Zealand flag was one item burnt; an area of grass, two trees near Tahī Street and a for sale-sign were the other items. Intoxicated youths are the suspects.

Should you hear any nonsense going on out on the road and see people up to no good phone us at the time so we can at least have a decent chance of catching them.

There is also a stack of tourists in our area so be patient with slow, unfamiliar rental cars and campervans on the road.

*Grant Heney, Rural Community Constable, Motueka.
Ph 528-1226 (Direct)*

Mapua Occurrences:

Feb 7: Minor accident at Marriages Road

Feb 6: Accident on Marriages Road when driver tried to avoid tree on road

Feb 5: 54-year-old Appleby man caught driving over 140kmh on the new highway. Licence suspended.

Feb 4: Theft of child's pedal plane from McKee Reserve. Returned to owner at Motueka two weeks later

Jan 30: Male served trespass notice at McKee Reserve

PANZ



Our first day back for the new year was the 8th February and we got away to a flying start with three new interested pastel artists.

Over the Christmas break members had been given a “challenge” to complete and the results were all compared. Out of a wide selection of photos, two were chosen by members who then had to decide on either/or and complete a painting from it, the rules being it must not look the same as the original photo. Some wonderfully original creations were produced and it was very exciting viewing each one as it arrived. There was also a lot of humour included.

The “Top of the South” pastel art exhibition will be over by the time you read this, so we hope that you managed to find time to attend either the opening and/or the exhibition over the two days. It is an exciting time for us as exhibitors and feed-back on our work is important. Results of the Peoples’ Choice voting and the raffles will be published in the next issue of the *Coastal News* as we will be too late to make this one.

Remember that we DO enjoy visitors so come along and see what we are doing at the Hall on a Tuesday morning. Enquiries to Glenys Forbes, 540-3388

Letters to the Editor...



Bouquets and brickbats

At the end of my letter to the *Coastal News* for the December 2010 issue I closed with the words, "Looking forward to 2011 with anticipation". Looking at those words now I ask myself, "What was I anticipating?" From a purely personal sense, continued good health and a happy, meaningful life. Two blessings for which I am most thankful. The same for my wife, family and friends. Beyond that, in a world that seems to be in a continual state of strife and upheaval, our small corner in the South Pacific is surely a most privileged location.

In relation to our Mapua community, I was anticipating a continuance of the improvements which were already under way in relation to parking and traffic management at Port Mapua and the adjacent Waterfront Park. Anticipating continued progress towards a refurbished and renewed Mapua Community Hall. Anticipating the transfer of the Dominion Flats land from the NZ Transport Agency to the TDC in order for the Gateway project and the cycleway programme to progress. Anticipating the Seaton Valley Stream to be completed this year, and so on. I have most likely left something out. But, all in all there is a pretty good outlook for these ongoing projects to be moving ahead in 2011.

However. Ah yes, there is always the "however" in any ordered scheme of things. The "however" I'm talking about are the serious traffic flow and public parking problems at the wharf area.. Over the Christmas and ensuing holiday period and right up to now (20 Feb) it has been a shambles. Vehicles being parked willy-nilly. Cars still driving in and out. Still that accident waiting to happen to an unwary pedestrian or worse still to a child. The bollards put up in early December by the TDC have largely been ineffective. Week-ends in particular. Not a good look. Not a good situation. In spite of this people have come, events have been held, the place has been busy. And, thankfully no casualties. Yet!

What's the history here? Basically I'm sad to say, the TDC has not done what was promised months ago. The Waterfront Park car park was to be completed by mid-December. To be fair, the contractor did make a start and it was useable during late December and early January. That is, useable if you could find it.

There was no signage of any kind until someone from the local business people made a sign and placed it on the corner of Aranui Road and Tahi Street where it had to compete with some real estate signs. Eventually a few (very few) people did find it and use it.

After mid January when the Anchor Contractors went back to work on the parking area, they closed it off to the

public. So no parking even if you could find it. About this time the TDC signage which was promised and supposedly scheduled for early December was finally installed. It directs you to car and boat trailer parking. Hello? The parking area is now fenced off. So where is one supposed to go to park the car and the boat trailer?

Who is thinking what, where and why here?. No co-ordination of purpose. Lack of overall supervision. Lack of oversight. The TDC has a person who is supposedly in charge of the Waterfront Project. This includes the car park. Where are you? The TDC has a person in charge of traffic and property matters. Where are you as well? Where is the common sense and regard for the public welfare? Regular communication with and to the public from the TDC staff is at present is either totally lacking or at the very best hit and miss. Mostly missing.

On a much brighter note, what's in store and what's the outlook for the Port Mapua area? Our Mayor Richard Kempthorne has at last responded to the ongoing suggestion that a steering group be established to consist of those concerned with the situation at the port area. This group to operate much in the manner of the very successful Ruby Bay By-Pass Stakeholders' Group did during the construction of the by-pass. Our Mayor has chosen participants intended to reflect the diverse interests involved. Their purpose is to meet regularly and to address the various issues involved. The initial meeting of the group to be held on March 4th. Good things can come from this. Not the least being all parties involved finding out what everyone is thinking. The actual doing part will be something else.

The Mapua Community Hall news is very positive as you will read in their contribution to this issue of the *Coastal News*. Unfortunately the partial funding for the renovation project is to be withdrawn from the TDC budget due to the huge cost of repairing the flood damage in Collingwood and Murchison. The hall project isn't the only project in the district to be affected.

Next month we will talk about the relocation of the sewage pumping station at the port. Hold your breath!

Yesterday is the past. Tomorrow is the future. Today is the present. In truth a "daily gift." Use it with care.

Hugh Gordon

Mapua Health Centre

We are 21 years old! And it's our birthday this month. That is the Mapua and Districts Health Centre came into being in the middle of March 1990 after an amazing effort by the local community in collaboration with the Nelson Area Health Board, who had just bought the site of the old post office. It has gone through various metamorphoses and changes over the intervening years, with the latest being the addition of two further rooms at the back of the building to allow for the hyperbaric oxygen unit and extra staff. Many thanks to all the volunteer help that we have had over recent years and to the health committee who generously give their time and energy to looking after the building and equipment.

The committee that oversees the building is actively looking at how we can plan for the future and cope with the increasing population and changes in health provision (with some services likely to be devolved from the hospital to primary care). Ideally we would like to build a new purpose-designed centre that also incorporated other services such as physiotherapy, pharmacy, dentist and other health professionals. If you have any ideas for achieving this or wish to help the committee please contact the chairperson, Chris Short, at chrisshort@xtra.co.nz.

We are very fortunate that Petrea King, founder of Quest for Life Foundation, has agreed to run a full residential cancer-care workshop in New Zealand in May this year. Quest for Life is an inspiring, practical, educational and experiential programme for men and women with cancer and their loved ones. Petrea is a well-known author, inspirational teacher and facilitator. She is qualified as a naturopath, herbalist, clinical hypnotherapist, yoga and meditation teacher.

In 1983 Petrea was diagnosed with acute myeloid leukaemia and was not expected to live. She lectures and conducts workshops around Australia and internationally and is the author of eight best-selling books and a dozen meditation CDs

The five day workshop will be co-facilitated with Wendy Batho who has been part of running the residential programs with Petrea for more than 17 years. Dr Tim Ewer will provide sessions on nutrition and other holistic approaches to cancer care and support. The workshop will be held on 2–6 May, 2011, at Kimi Ora, Kaiteriteri. It is limited to 30 people attending (including partners and carers). Details and the brochure can be obtained from PO Box 29, Mapua, Nelson 7048, or contact Julie Ewer by email: julie@inhealth.co.nz or phone 03 540-2705.

Each year we have several final year medical students sit in with the doctors and nurses to get some experience of general practice. At present we have Tessa and in March/April we will have Laura Nachtigall. Feedback from previous students is that they really enjoy their time at the Health Centre and greatly appreciate the opportunity and experience of working with patients in the GP setting. Thank you for helping us support these young trainee doctors.

This year's flu vaccines will soon be available and we will be contacting those who are on our computer recall system when they arrive. However, if you would like to receive a vaccination against the flu and have not had one previously from our centre please call the practice nurse, as we need to order sufficient supplies in advance.

Just a reminder that we normally require 24 hours notice for preparing prescriptions and if you have internet access you can re-order routine prescriptions by emailing prescription@mapuahealth.com (you will need to give your details re name and exact medication required). Unfortunately, due to the high demand for same-day prescriptions we will now be charging an additional fee for urgent, same-day scripts. The charges are \$10 for routine prescriptions for next day pick-up, an additional \$10 if not paid within five working days, and \$20 for a same-day prescription.

Some of the events for the month:

3	<u>World Book Day</u>	www.worldbookday.com
6	<u>Red Cross street collection</u>	www.redcross.org.nz
6	<u>National Children's Day</u>	www.childrensday.org.nz
8-14	<u>WellChild /Tamariki Ora week</u>	www.wellchild.org.nz
8	<u>International Women's Day</u>	www.internationalwomensday.com
8-14	<u>Child Cancer Foundation Appeal Week</u>	www.childcancer.org.nz
8-14	<u>National Just Water Week</u>	www.kidneys.co.nz
8-14	<u>Schizophrenia Fellowship Week</u>	www.sfnat.org.nz
8-15	<u>Victim Support Week</u>	www.victimsupport.org.nz
10	<u>World Kidney Day</u>	www.worldkidneyday.org
12-20	<u>Muscular Dystrophy Awareness Week</u>	www.mda.org.nz
14-20	<u>Brain Awareness Week</u>	www.neurological.org.nz/brainweek/index.php
16	<u>Walk to Work Day</u>	www.livingstreets.org.nz

Residents ask council for rule review

Toru Street residents are asking the Tasman District Council for a review of the district plan rule which allows firms to set up full commercial activities in a residential zone.

A motion supporting the Toru Street residents' group proposal was passed without dissent at the February meeting of the Mapua and District Community Association. It was moved by Fred Cassin of the residents' group, who says that the rule needs to be either tightened or deleted and the council's policy of non-notification needs changing.

The residents are upset that the rule makes it too easy for fully commercial activities to set up in a residential zone. The rule applies not just to Mapua but any residential area in the Tasman District.

In the case of the Harcourts real estate business in Toru Street, the issue was aggravated because the council did not notify neighbouring residents of the

proposal, and the firm subsequently breached a number of its resource consent conditions.

Deputy Tasman Mayor Tim King told the meeting that non-notification of the Harcourt application was in line with recent Government changes to the Resource Management Act but acknowledged that the law changes were complicated.

Cr Trevor Norriss said he believed the issue had arisen only because Harcourts had breached parts of its consent.

One of the complaints from the Toru Street residents' group was that advertising signs at the Harcourts' office breached its consent. However in early February, Mr Cassin found himself in trouble with the council on the same issue.

He received a letter from a council compliance officer advising that his advertising sign for his scaffolding business at the Ruby Bay Bluffs was too big. He said he was unaware of the rule on sign size, and has changed his sign to comply with the rules.

David Mitchell

MAPUA COMBINED PROBUS

The first meeting of the year for the Combined Probus Club of Mapua and District was on the 4th of February. The guest speaker was Bill Rzoska who described his life as a coal miner at the Denniston Mine near Reefton.

The working day started with a company bus ride from Westport to a mine bath-house to change into work clothes before entering the mine. An average working day was anything from four to six hours with eight miners working in pairs in different shafts. The Sutherland mine that Bill had worked in for 20 years was relatively shallow at 200 metres deep and an area that exceeded that of North Canterbury. The miners entered the mine carrying three containers of explosives or the required detonators plus their lunch bags, taking up to 20 minutes to reach the coal face.

Bill made use of a whiteboard to illustrate how the explosive of nitroglycerine was inserted into a set number of holes into the coal face. He was able to show how the one-metre diameter support poles were constructed in the mine shaft, which could be up to six metres in height set between a smooth granite floor and a sandstone ceiling. Bill showed a specialised spade that was used to shovel the coal on to a conveyor belt that took the coal out of the mine. It had a blade about three times the size of a normal shovel.

Miners' health was another subject Bill dealt with. A large fan was installed at the entrance of the tunnel and the air was circulated down the mine tunnel to the coal face, driving out any poisonous gasses along the

opposite side of a scrim sheet dividing the tunnel. The miners all wore Davy lamps in which a small flame would turn blue in an area with low oxygen levels..

The mine was opened in 1954 and was closed in the mid 1990s.

The club's mini speaker was Bob McKenzie. Bob, and his wife Rae, went on a recent "entrepid journey" involving a 21-day coach tour through the Northern Territory and the Kimberley areas of Australia. Their 6000km tour started at Mount Isa and the main part of the tour was the visiting of eight cattle stations. Their transport was a 40-seater bus with a staff of three, including a cook. The bus was set up to tow a large covered trailer which carried all the necessary equipment. Motels were used on several nights.

Bob and Rae were most impressed with the cattle station management and staff that lived and accepted an isolated lifestyle. All the stations farmed the Brahman cattle that are periodically transported by long road train trucks to the cargo ships operating out of Darwin or Broome. Most of the highways were long and straight single lanes, mostly unsealed so creating plenty of dust.

From Mt Isa the tour drove west travelling through the towns of Katherine, Wyndham and along the Northern highway to Broome. The tour had a two-day stay in Broome before returning along the highway to finish the tour at Darwin. There Bob and Rae were able to visit the famous Kakadu National Park and the crocodile farm.

David Higgs

Sam's Spam

March

Hi everyone. I think I might have to rename this column Sam's Scam as I seem to have to keep issuing warnings! Scammers are very busy and they keep moving on to ever more convincing ploys. One that has been going round our region recently is the one where you get a phone call, not an email. This has been happening all over our region as I know of people from Mapua who have had these calls. Scammers claiming to be from Microsoft ring up and tell unwary victims that their computer has a virus. The caller then talks the victim through installing software on their computer which supposedly removes the virus. Instead the software allows the scammers to remotely log into the computer and access all the personal files and information on it, including credit card details etc.

If you have unwittingly fallen for this scam and installed this software, turn your computer off immediately and take it to a specialised computer shop to have the software removed.

Emails scams are more popular than the phone calls so here are some guidelines to protect yourself and your data:

Never open anything unless it's from a recognizable email address (however, scammers

are getting better at copying authentic ones, so be careful).

Never respond to any 'junk' mail. Just because you have received junk mail, it doesn't mean that the scammers know it is an active email address but if you hit 'reply' to ask them to 'stop sending this rubbish' they will know the email address is an active and will send you even more junk.

Never respond to anything that offers you anything in exchange for details or money.

If something you belong to (as a member) suddenly asks you to confirm or update your details, check with the 'real' organisation. They will be able to say if it genuine (unlikely) but so they can take action.

Never respond to any 'help me get my millions out of an unused bank account because the owner died without an heir' type emails.

Use virus protection. There are plenty of free ones, e.g. AVG, Spybot.

Free Stuff

This month's freebie is Google translate. This is a free translation and although not perfect, it is very useful. <http://translate.google.co.nz>

Under The Bonnet with Fred

Darryl's 1980 'Black Magic' Corvette

Darryl is a well known person in Mapua as an automotive technician for Perry's Auto Services . You may have got a WOF from him and as Darryl said "or you may not have".

Darryl has a liking for the GM stuff, having owned Chevies and a Camaro for 13 years. He always wanted that 1980 Corvette and about three years ago he found a car on the Internet and arranged through an agent to buy it in Washington State, USA. He admits to being nervous handing over \$26,000 and having to wait four months before the car arrived.



some outstanding 22in chrome wheels contrasting with the black body to give the Corvette "bling ". It is 4.712m long and 1.753m wide. It can do 0-60mph in 7.1 sec. Fuel consumption? Don't worry, this is a weekend car.

The interior has nice black leather, with speedo

and rev counter around the steering column and vision to instruments is not blocked with an air bag steering wheel. The speedo only read to 85mph as the USA government tried contain fuel consumption. A cluster of round dials just above shift lever are all easily seen . And could I say what great place for the heater controls, being immediately above the shift lever.

Darryl popped the T-top off the roof and said "Come on I'll take you for a blast up the new by-pass". Seated in the car it felt very sporty, being seated low down with the wind screen slightly high and legs inside a tunnel beside the gearbox. I could see all the instrumentation and experience the functions of the car from the passenger seat.

Left at the Tavern along Mapua Drive the Corvette accelerated quickly up to speed. Going over those notorious bumps opposite Seaton Valley Road made me want to hold myself up a bit just in case as the car was so low. We turned right up Te Mamaku Drive (the by-pass) and we started really motoring. From the engine and exhaust came all the true American V8 noises which so many New Zealanders love. To me it was music as the speedo on the Corvette tried hard to match the rev counter, then suddenly the car took off as we passed the Old Coach Road turn-off as the hill eased. There was little wind noise as the aerodynamic Corvette flew over the highest point on the by-pass. We were now cruising at US highway speed with the car and Darryl revelling in it. But unfortunately like all good experiences it came to an end when we slowed to turn into Aporo Road to take the Ruby Coast Scenic Route back to Mapua.

Do we judge the Corvette against the Mustang? No. The Mustang has a practical back seat, making the Corvette a true American sports car. I liked the chrome mag wheels.

The name Corvette was taken from a WW2 small, fast patrol boat designed especially for submarine patrol in the Pacific Islands . I think the NZ Navy had a few for inshore patrol up into the 70s as I remember them coming into Whakatane harbour. The Corvette also featured in a long-running TV comedy called McHale's Navy in the 60s, starring Ernest Borgnine. GM wanted a name which had a history with speed and potential buyers could relate to, so in 1953 GM unveiled its first true sports car, the Corvette.

The body on the 1980 Corvette is all speed and style. The front grill is incorporated in the front bumper which is slightly pointed, hinting at a wing appearance. The wings are also incorporated in the badging as it is changed a little with each model, Darryl tells me. Up across the bonnet are the nice signature roll-away lights which look almost comical when up . Front guards are raised with vents behind the front wheel arches. When sitting in the car the front appears wider then the cab but guards gave good definition of the width when driving at speeds. The sides of car roll in sharply, giving the front of the car a pumped-up, ready-to-go look. The rear of the car is nice and tight with small diameter, round tail lights and a spoiler included in the fibreglass body. Despite the fibreglass the car still weighs 1600kg but I must say the power-to-weight ratio of 7kg/1hp is good and makes for a fast car.

The engine is a 5.7 litre (350 cu in), L82 high-compression motor, producing 235bhp, with a four-barrel carburetor. There is not much space under the bonnet and it also had some anti-pollution gear attached to the intake system. It has straight pipes and dual exhaust system, with air-conditioning and dual circuit power brakes. Darryl has modified the brakes and has

Fred Cassin

Mapua & Districts Soccer Club

Here we go! The 2011 season for the Mapua & Districts Football Club is about to kick off after what we hope was a restful and fun summer for our members.

Registration forms for junior teams are out, with collection points at Mapua, Upper Moutere, Tasman, Tasman Bay Christian, Mahana and Dovedale schools. Please fill them in and either drop them off at school, post them to PO Box 38 Mapua, drop them off at 69 Iwa Street or email to sianpotts@xtra.co.nz

Match Start Dates: Senior men – 2nd April; Senior women – 3rd April; All juniors – 7th May.

We welcome past and new players of all abilities, no experience is necessary. If you are interested in playing or if your child is interested please contact the following people:

Senior Men co-ordinator – Toby Wild
thewildfamily@xtra.co.nz

Senior Women co-ordinator – Bridget Wild
thewildfamily@xtra.co.nz

Junior co-ordinator – Sian Potts
sianpotts@xtra.co.nz

We are always looking for willing parents/guardians/grandparents to help within the club, if you are able to help in any way or would be interested in coaching or refereeing, please get in touch.

Nelson Bays football club offers great training courses for refs and coaches; we will even fund the cost of some of the courses so please have a look at the site, www.nelsonbaysfootball.co.nz It's a great way to get involved with your child's development and to get more involved in the community.

Registration Day

This year's registration day will be held on Sunday 27th March at 10am – 1pm. Come along to collect your kit and score a free sausage sizzle! Please note that if we have not received payment on or before this date you will not be allocated a kit. Ensure we have received your payment before this date to avoid disappointment.

The Grind is on the Move

The Grind Espresso Bar and Roastery has just moved into new premises at 14 Warren Place (next to Karpaintz and behind the walkway to the beach). Having been on Stafford Drive in Ruby Bay for the last year, the opening of the by-pass severely affected trade to the extent that we had to move. We are lucky to have a fantastic bunch of loyal customers who support us and we warmly welcome new faces.

We will still be serving the same consistently excellent takeaway coffee and Lance will be doing more roasting with the recent purchase of a larger coffee roaster. Our opening hours are Monday to Friday 7am to 1pm. If you can't get to the shop in these opening hours, don't forget we can deliver beans/plunger coffee to your door or they are now available at Mapua 4 Square and Moutere Gold. Ph 021 514 190 or email thegrind.rubybay@xtra.co.nz

We look forward to seeing you soon!

BOOK REVIEW

Room by Emma Donaghue, reviewed by Jeanette Cook. Available in the Mapua Library

Five-year-old Jack, the narrator, has spent his entire life in the company of Ma in the confines of the 11-foot-square room in which he was born. He does not know that his 26-year-old mother was abducted seven years earlier and sealed in the code-locked windowless room. Her captor and rapist, referred to as “Old Nick”, visits her most nights, and Jack must stay in the wardrobe till he leaves, as Ma does not want them to meet. Old Nick shows no interest in his child, but, conditional on Ma’s quiet obedience, he continues to supply them both with basic needs and food, and sometimes a requested “Sunday Treat”. Ma has until now kept the truth of their situation a secret from her son, letting him believe that the world in Room with Ma is the real world, and has strived to give Jack as orderly and normal a childhood as possible, providing him with food, stories, life skills, “Phys Ed”, entertainment, and most of all her unwavering love.

A bleak story one might think, but thanks to Emma Donaghue’s extraordinary writing and well-crafted plot her novel is gripping, heart-warming without being treacly, highly convincing, and sometimes humorous and satirical in its vision of a strange world from a child’s point of view. Jack loves fairytales and is intelligent, lively, and

generally happy with his regular daily life in Room. The items in Room have been personified to become his friends – Wardrobe, Door, Table and Rug all have a life and history of their own. He watches TV but believes TV people are not human and live on planets in Outer Space, which he and Ma get tiny glimpses of via a skylight in the roof.

Ma knows it cannot last, and when their power goes off for a day as punishment, or perhaps because their captor was unable to pay the bill, she realises that to save her child’s life they must escape. On Jack’s fifth birthday she begins gently to enlighten him about the truth of their situation and together they hatch an escape plan that requires Jack to act with bravery and initiative way beyond his years. At this point we readers are totally hooked, not to mention somewhat relieved ourselves to emerge from the convincingly claustrophobic confines of Room.

The second half of the book deals with Ma’s return and Jack’s assimilation into the real world, and the frenetic and ridiculous hype of the media, who refer to Jack as ‘Bonsai Boy’. Donaghue continues skilfully to tell the story through Jack’s ingenuous but sharp eyes, recounting his initial agoraphobia and nostalgia for the “safe” world back in Room, his fear of separation from Ma, and his confusion at meeting his unknown family and learning that in “Outside” there are other children like him.

Fire Brigade

November 10 – February 18 call-outs



- Nov 16: Car in ditch Appleby Highway. Stood down on station. Wrong area.
- Nov 26: Tanker to Motueka, turned back.
- Jan 28: Bird’s nest on sensor light, out on arrival.
- Jan 29: Tanker to pines on fire Motueka Valley
- Jan 31: Tanker to Motueka, turned back.
- Feb 2: Car vs tractor, injures to car driver.
- Feb 7: Car vs golf cart.
- Feb 12: Tanker to fire on Rabbit Island.
- Feb 12: Rubbish fire Old Coach Road, put out. No permit
- Feb 18: Multiple fires between Tahi St & Langford Dr.
15 calls year to date.

Safety Tip – All open air fires need a permit.
Rural fire network, Ph 544-2441

A recent survey stated that the average person’s greatest fear is having to give a speech in public. Somehow this ranked even higher than death which was third on the list. So, you’re telling me that at a funeral, most people would rather be the guy in the coffin than have to stand up and give a eulogy.

— *Jerry Seinfeld*

Advertising Costs

Ads go by the size in column cms, columns are 8.5cm wide and costs are as follows:

- \$2.50 per cm up to 6cm
- \$3 per cm up to 10cm
- \$4 per cm over 10cm
- with 20% discount for long term advertising (3+ months) and prompt payment.

The deadline is the 20th of each month with each issue coming out on the 1st. Email coastalnews@mapua.gen.nz for full terms and conditions

MAPUA LIBRARY



As from Tuesday, the 1st of March there will be a change to library hours. We will be open Monday to Saturday every afternoon from 2pm to 4.30pm. On Wednesdays we will stay open until 6.30pm and Thursday morning will also be open for the morning session of 10am to 12.30pm.

We realised from comments received from our readers that there has been some confusion with our differing hours, therefore it has been decided to standardise the afternoon sessions, while still catering for those that can get to the library only in the morning or evening. We will trial these hours for three months and of course will welcome your feedback to these changes.

There are still some members who have not collected their new library cards and we would urge you to call in and uplift them. Once you are in our Koha system, with your User Name and Password set, it will be possible to access Koha from home. At this stage it will allow you to check what books you have read (since we have become computerised), and search the Mapua Library catalogue to ascertain whether we have a particular book in stock. We will eventually introduce other features that will offer an even better range of service to you.

Well, what a marvellous Christmas and holiday period the library has experienced this summer. We were kept very busy with our members' visits and were also able to welcome many campers who joined the library as temporary members. Our membership has soared in the past two months. Nothing makes us happier than to see the library

filled with people, not only searching for reading material but socialising as well.

Of course what also made our summer time memorable was the success of the BEARS reading programme. Run over the school holiday period, we had 68 children participate in the programme which caused Lorraine Powers (the originator of the programme) to have a permanent smile on her face, as did all the volunteers and members of the community who really enjoyed the experience of interacting with the children. A very big thankyou to Eileen Dobbie who co-ordinated the three sessions each week. The feedback from parents and children has been so positive that we will definitely look at providing this programme again and Lorraine is delighted that the children responded so positively to the programme.

At the end of January we were also delighted to host the launch of Iola McPherson's book, *Turning Back the Clock*. On a very hot afternoon over 60 people joined Iola at the library to hear about her experiences of life in early Mapua and also acquire a copy of her interesting book. Such interesting memories; the book is available in the library, and also for sale at "Touch the Sea" at the aquarium.

Dot Moriarty

New Library Hours:

Monday: 2pm – 4.30pm

Tuesday: 2pm – 4.30pm

Wednesday: 2pm – 6.30pm

Thursday 10am – 12.30pm; 2pm – 4.30pm

Friday 2pm – 4.30pm

Saturday 2pm – 4.30pm

Club MAPUA

Giant Pumpkin Growing Competition

The 2011 Pumpkin Competition is on Saturday 26th March at the Mapua Tavern. Weigh in starts at 2pm followed by prize giving at 4:30pm. As well as the pumpkin categories all entrants go in the draw to win a major spot prize donated by Andy Brown from Coast to Coast Helicopters and the event is a great opportunity for everyone to get involved in some way. While the trophy for the heaviest pumpkin is most sought after there are also many fun categories and spot prizes on the day for all entrants. Registrations are accepted on the day (only \$5) and Children are especially encouraged to enter. The pumpkin competition will be followed in the evening by the Cinderella Pumpkin Party at the Mapua Tavern with a prize for the best "Cinderella".

Pumpkin Categories include: Big Boy – Heaviest Pumpkin; Wide Girl – The pumpkin with the widest diameter; Prettiest Pumpkin – the perfect specimen; Ugly Fugly – Obviously not the prettiest!; Arty Farty – who can best turn their pumpkin into a work of art; Best Dressed Scarecrow – Adults & Children's section; Children's Under 50 kg; Children's Over 50 kg; Children's Sculptured Pumpkin - Children under 12 best decorated pumpkin.

Club Mapua would also like to hear from any other clubs or businesses who would like to be involved in sponsorship or donating a prize.

All proceeds will go towards the Summit Rescue Helicopter.

Contact Rhonda 540 2552 Rhonda@mapua.gen.nz or Kathryn 540 3545 Kathryn@mapua.gen.nz

"Club Mapua is a not-for-profit organisation based in Mapua. The club has been established as a community social club to organise social events with the aim of raising money for community projects."



Fishing success - Mapua Wharf

Two Wonderful Speakers are coming to Nelson

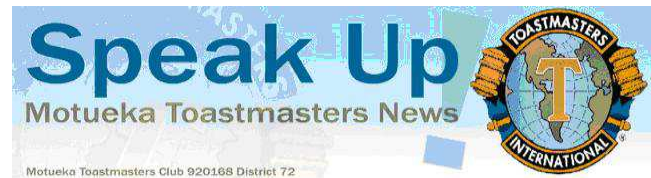
Coming in May: Petrea King, founder of Quest for Life Foundation, author of 'Your Life matters', 'Sometimes hearts have to break' and a leading light in the field of holistic health. Stricken with leukemia at 32, Petrea confronted and came to accept the prospect of death. Yet the unexpected happened - she survived. Then she had to figure out how to live. Grounded in her many years as a counsellor and teacher she offers the essential ingredients for profound healing and peace of mind. "There is far more to cancer than diagnosis and treatment."

If you would like to join her for a week of inspiration, insights and knowledge that will leave you confident to embrace the challenge of cancer or serious illness please contact Julie Ewer on 5402705 or email julie@inhealth.co.nz

William Meader, psychology professor and author of 'Shine Forth' will be in Mapua on **Wed March 9th** to give a talk on understanding the soul's purpose. If you're interested please come along to the Bowling Club at 2pm. Everyone welcome.

Both these wonderful speakers have websites if you need more information.

IN YOUR NEIGHBOURHOOD TERM ONE, 2011



The Way2Go trailer, jam packed full of sporting equipment and games, is coming to a park near you...

The tailor made circuit returns to the region throughout term one, dropping in on a handful of Tasman's premiere parks and reserves from Brightwater to Murchison to Takaka, and a few spots in between. The table below lists the IYN program schedule for term one, 2011:

Date	Time	Venue
Wed 23 Feb	3.30-5pm	Brightwater Domain
Wed 2 Mar	3.30-5pm	Tapawera Reserve
Wed 9 Mar	3.30-5pm	Mapua Domain
Wed 16 Mar	3.30-5pm	Moutere Hills
Wed 23 Mar	3.30-5pm	Murchison
Wed 30 Mar	3.30-5pm	Takaka Prim School

The IYN program promotes healthy lifestyles and community cohesion via providing a range of fun and challenging recreational games and activities in local neighbourhood parks.

In your Neighbourhood is proudly presented by the Tasman District Council in association with Way2Go and Sparc and is FREE community event.

For further information, contact: Paul McConachie, TDC Community Recreation Advisor, 543 8525

Want to speak with confidence?

If you have ever thought about joining Toastmasters but thought it would be too scary talking in front of people, you are just the sort of person who should join. This is a friendly and supportive way to learn and overcome your fears. This is not a club for people who are competent speakers with nothing to learn. It is for people who have something to learn, who want to practice the art of effective communication. Sure some in the club are better than others but we need a mix of experience to run the club successfully. Come a long for three nights for free and see if you like it. No obligation.

Toastmasters will teach you to listen objectively, speak with confidence and evaluate your peers as you watch them present a speech. You will learn all about impromptu speaking and having fun while doing that. Toastmasters isn't just about delivering a speech, it's about learning to becoming a competent communicator. Once you have become a competent communicator there is the opportunity to learn the art of specialty speeches, being an entertaining speaker, technical presentations, story telling, interpersonal communication and more.

Another side to Toastmasters is leaning to become an effective leader. You will practice your leadership skills each week preparing for, organising and conducting meetings and motivating others to help themselves. Leadership takes practice and Toastmasters is a great and supportive environment for doing this.

Join any time! Toastmasters is open to anyone 18 years and older. It's all about opening doors to opportunities, a club where you can learn some very valuable skills about listening, speaking and leadership. Toastmasters Motueka meets the first and third Wednesday night of the month at 7.15pm at the Band Hall, Motueka. For more information give your local girl Kerri Bainbridge a call on 540-3882, or email kabainbridge@xtra.co.nz, or Glyn Lewis-Jones on 03 528-9474 or email glynlewisjones@gmail.com

Note: 1-14th March is Toastmasters' week

Hills Community Church

How Long Can You Wait?

I write to you from the Sonoran Desert in Arizona, USA. For the past several weeks Rod and I have been living here while he receives treatment for cancer (prognosis: excellent). I've never been a huge fan of deserts or barren places of any kind but they have interesting things to teach you. For instance, most barren places are actually teeming with life—some of it quite rare and unusual—like the saguaro cactus.

The saguaro cactus (*Carnegiea gigantea*) is one of the defining plants of the Sonoran Desert its only habitat. It is the largest cactus in the US. These plants are large, tree-like columnar cacti that develop branches (or arms) as they age, although some never grow arms. These arms generally bend upward and can number over 25. Saguaros are covered with protective spines (ouch!), white flowers in the late spring (the state flower), and red fruit in summer (made into a syrup for wine by the native people).

Most amazing is that they are very slow-growing cactus. Although saguaro can grow to be between 12-18m tall it takes them a long time to get there. A 10-year-old plant might be only 3.8cm. A metre high cactus might be 20-50 years old. They don't begin to flower until they are 30 years old and the distinctive arms take 50-100 years to appear. But they are also long-lived. With the right growing conditions, it is estimated that saguaros can live to be as much as 150-200 years old. This is not the plant for the gardener who wants instant gratification!

Anyone who knows me even slightly knows that I am not a patient person. I find high speed internet agonizingly slow. I know 'all good things come to those who wait' and this axiom has been proven multiple times in my life but I still find waiting hard. I have full sympathy for Habakkuk's complaint (Habakkuk 1:2): "How long, Lord, must I call for help, but you do not listen? Or cry out to you, "Violence!" but you do not save?"

It can seem an interminably long time for things to change in our lives. Here in the US many people are unemployed and waiting for a much-needed turn in the economy. People in Haiti are still waiting for their country to rebuild and recover from an earthquake that happened over a year ago. All over the world people wait for peace, an end to hunger and suffering and stable governments. We wait for loved ones to recover from illness or addictions. We wait for the perfect mate, for inspiration, for chaotic lives to return to normal (whatever that is).



Is God there with us in the waiting? Yes! "I wait for the Lord, my whole being waits, and in God's word I put my hope." (Psalm 130:5) Waiting may not be easy but I truly believe we do not wait alone. We may not always feel God's presence but that doesn't mean God isn't with us in our waiting. We may be impatient in our waiting, but we can hope and trust that God's timing is always perfect. There are lessons to be learned in barren places. Waiting places. Isaiah reminds us that "those who hope in the Lord will renew their strength. They will soar on wings like eagles; they will run and not grow weary, they will walk and not be faint." (Isaiah 40:31).

May God meet you in your waiting places and may you find the strength and patience you need until something happens.

*Patiently waiting in the desert, Marilyn Loken,
Minister, Hills Community Church*

Happening @ Hills—we are a community-based, multi-denominational church with historical roots in the Anglican, Presbyterian, Methodist and Pentecostal traditions. We offer both traditional and contemporary worship in an informal and relaxed style. Visitors and newcomers are most welcome.

Sunday Worship: Traditional service 9am, Contemporary service & Children's programme including crèche 10:30am; Holy Communion celebrated at both services on the 2nd and 4th Sundays with morning tea in-between. 1st Sunday of each month: one family-style service @ 10:30am followed by a shared lunch.

Weekly Calendar:

1st & 3rd Tuesdays: 12:15pm—NZ Prayer Book Communion service followed by intercessory prayer

Wednesdays: 10am-noon—Kidz n Koffee Open to parents-caregivers-pre-K kids—a great way to make new friends!

Fridays: 10am-noon—Craft n Coffee—learn a craft & share a laugh! Open to all, crèche provided

Drop-off For Area Food Bank – Bring your non-perishable food items to the church (122 Aranui Rd) on Friday mornings between 9am & noon.

We also offer numerous home groups and youth activities. Contact 540-3848 for more information on our ministries.

Noticeboard

Book Club looking for New Members. We are a social, gastronomic group and would love to welcome a few new members. We meet monthly in and around the Moutere/Mapua area for an enjoyable evening of book discussion and a shared vegetarian meal. For more information, please phone Joan on 543-3825 evenings.

Grazing Available: Suitable for pony/alpacas. Water trough. Ruby Bay area. Ph 5402297

Coastal Connections Social Group: The next lunch-time gathering of the Group is to be at "Up The Garden Path", 473 High Street, Motueka, on 10 March. Look forward to seeing you all. Julie Haliday, 540 3533

Fair Exchange: We meet the second & fourth Wednesdays of the month. 9am at the Smokehouse to exchange homemade or homegrown items. Info: Debbi, 540-2942 or DLBamfield@gmail.com.

Probus Club meets first Fridays, Mapua Hall 1.30pm. All retirees most welcome. Enquiries to Pres. Ray Kitto, 03 520 2622, Secr. Margaret Butchart 5402686

Coastal Garden Group meet first Thursdays, 1.15pm, Supper Room, Mapua Hall. Members, guests & visitors welcome. Barry Highsted 540 3139.

PANZ (pastel artists of NZ) meet each Tuesday, Mapua Hall, 9am-noon. If you are interested in trying pastels as a painting medium, please join us. Glenys Forbes 540-3388.

Mapua Art Group: Painting/Drawing Thursdays 9-12.30, Supper Room, Mapua Hall. Like-minded artists get together to paint and help each other in a fun, social environment. All levels & media welcome. \$4 session includes morning tea. Tables, chairs provided. Lisa Chandler, 540 3933

RSA Meetings: RSA room, Mapua Library, 2.00pm, second Mondays, and refreshments are served at the close.

Mapua Hills Rose Society (est 1949) meets 1st Mondays (except J months) 7.45pm, Supper Room, Mapua Hall. Rose lovers, growers, visitors and guests very welcome. Enquiries: Letty Thawley, 540 2876, Margaret Sinclair 03 528 8477.

Need technical help? Can't connect your DVD player? Don't know how to download photos from your digital

camera? Computer running slowly? Local help is at hand! Average job price only \$20! Basic web design also available - pages start from just \$35. Call Sam, 540 2804. – sambennett@live.jp

Friendship Club meets third Thursdays 2pm, Supper room at the Hall. We have a game of indoor bowls followed by afternoon tea (please bring a plate). \$2 door charge and 20¢ raffle. We are a group of friendly people who enjoy a good laugh (some of us are not good bowlers). We welcome new members. Val Roche 540-3685

Genealogy Computer Discussion Group: This year our bimonthly meeting will be 1.30pm on Saturdays, on the following dates: 9 Apr, 11 June, 13 Aug, 8 Oct and 10 Dec. Info: Val 540 3931 or Peter 540 2686.

Children's Gymnastics: 1-9yrs. improves a child's strength, balance, coordination, spatial awareness & eye tracking using hand apparatus, songs, and gym equipment. Thursdays @ Mapua. Fridays @ Upper Moutere. Ring Sam, 5432512

Toy Library: extensive selection of toys, puzzles & videos for children 0-5yrs. Behind Mapua Hall every 1st & 3rd Tuesday, 10-11.30am & 6.30-7.30pm. Phone Emma 03 929 5123 or Gill 543 2195 about membership or casual hire.

Women's Recreation Group - meets outside Mapua Mall Thursday mornings. Leaves 9.15am for 1½ hour walk. Route varies. Join us whenever you can. Some members may cycle. Info Lynley 540 2292.

Mapua Village Quilters meet each Wednesday evening. We are a small group, anyone interested to join us, please contact Linda, 540 2840

Spinners, Knitters, Weavers – Wool Gatherers meet at Mapua Hall, second Tuesdays, 10am. All welcome.

Kidz'n'Koffee Playgroup, Wednesdays (in school term), 10am-noon at Hills Community Church. Ages 0-5yrs. All parents & caregivers are welcome to attend, no cost, donation for morning tea. Come & relax & meet some neighbours. Lisa Gant 543 2530, Tressa Waynan 540 2632.

YOGA with Robin - Classes weekly. All levels welcome. Call 540 2113 for class times & information. www.rubybayyoga.com

This document was created with Win2PDF available at <http://www.win2pdf.com>.
The unregistered version of Win2PDF is for evaluation or non-commercial use only.
This page will not be added after purchasing Win2PDF.