

October 2010

October 2010

www.mapua.gen.nz

# Coastal News

email: [coastalnews@mapua.gen.nz](mailto:coastalnews@mapua.gen.nz)

covering Mapua & Ruby Bay,  
run by volunteers

## Mapua Hall project at low ebb

At present the hall committee is meeting frequently to push ahead with hall development business. For those members involved in hall management, fund-raising and the hall planning process it has meant five meetings in the last month so it is quite busy when you add all the work that needs to be done around these meetings.

The hall planning process was never going to be easy as there are almost as many opinions as there are people involved in it. Much of the work so far, has centred on how we may get a very good result for our community by retaining some of the key spaces in our present hall. If this were the development option chosen it would mean upgrading and smartening up some of the existing spaces as well as demolishing the very sub-standard parts, building new and extending. There are certainly some major advantages in this line of thinking, not the least of which are:

- 1) Minimising the potential costs of our upgrade
- 2) Maintaining a facility where most existing hall users will be able to continue their activities while the upgrade is going on.

Pulling together a design brief has been more difficult than I expected, largely because there has not been universal acceptance that this is the logical next step in the development process. I said this was what we were working on in last month's *Coastal News* and have to report that the design brief is still in its infancy. However, I fully expect to be able to report more positively in next month's edition.

Fund-raising has got away to a most unpromising start. It began with a stall and door collection at the Garden Club Spring Show. We would like to thank the Garden Club for this opportunity but the rain arrived at a critical time and people obviously decided to stay at home.

Our fund-raising launch, a community dance, will be all over by the time this article goes to print but at the time of writing, with only five days to go, it looks as if we may have to cancel. The dance had been widely advertised and the committee had been selling tickets through our personal contacts but support was very disappointing. Maybe we chose the wrong type of event or people are just too busy. Unless there is a late rush on tickets, we are likely to come out of this venture with a loss. I hope by next month, I can report that the event went ahead and that the hall development fund came out on the right side of the ledger.

Local fund-raising is an essential component of upgrading our hall. None of the funding agencies, and this includes the Tasman District Council, will provide funding unless the community raises some significant capital towards the project. We do not at present have the necessary capital and if we can't raise money, all the planning in the world won't see any improvement in our community hall.

*Richard Bullock, chairman, Mapua Hall Committee*

**PS:** Subsequent to submitting this report, Richard has resigned from the hall committee and as chairman.

### *Applications for Grants*

Voluntary organisations are invited to apply to the Mapua/Ruby Bay and District Community Trust for a grant. Applications will be considered in November and should be in by 1 November. Application forms can be obtained from the secretary (ph 540-3203) or the treasurer (ph 540-3642) and returned to PO Box 19, Mapua 7048.

Grants will usually be less than \$300 but this may be varied at the discretion of the trustees.

# Site of pump station clarified

The exact location of a waste pump station in the Waterfront Park was of concern to some people, the Mapua & Districts Community Association heard at its September meeting.

Because there were several interested parties Elena Meredith proposed the formation of a community partnering group to liaise with the project manager, Don Robertson.

Gary Clark (TDC transportation manager) clarified how the structures would look in the proposed location in order to clear up any misconceptions or misinformation:

As part of planning design, it was important to create linkage of wharf precinct area and car park area to the park development as a whole. Robin Simpson's design has done that. This means the location of the waste water pump station had to be addressed now and not later.

The underground wastewater pump station has been moved to provide cost savings for the project. Savings will be used to provide a second structure within the new waterfront park. This structure will also be used to disguise the underground pump station and provide a bookend treatment to the park and connection to the wharf area, including interpretative signage. The building will be of similar style to the other planned structure opposite Iwi Street to provide toilet facilities for the area.

Some bores will be put down in the new pump station site to check its suitability as part of this consented process.

These changes are designed to enhance the connection between the different spaces in this area and

will form the building blocks for the overall redevelopment of the Mapua Wharf Precinct and Waterfront Park. Cr Trevor Norriss and Mr Clark agreed that the outdoor seating area licensed to the adjacent restaurant (formerly The Smokehouse) would not impede on any future plans regarding possible the launch site for cycle-walkway connection to Rabbit Island or public walking area.

Those present at the meeting were reassured by the explanation and discussion. Mr Clark was encouraged to keep people informed about the consented process so that they knew what is going on in order to avoid further misinformation. This underscored the need for a partnering working group to work with the project manager.

## **FCC health advocacy**

A medical officer of health clinic has been established for those residents who live or lived nearby during remediation within the area identified by the District Health Board as potentially having some exposure. The support package includes health checks and house cleaning. Those concerned should contact Dr Jill Sherwood, Medical Officer of Health, on 546-1537 for follow-up.

As part of the Ministry of Health's support package, an epidemiology study is also to be undertaken. The sub-committee tabled two draft letters: one to the Ministry offering the liaison involvement of Tord Kjellstrom who is an experienced environmental and occupational epidemiologist, and the other to the TDC regarding the waterfront park.

The next meeting of the association will be at 7.30pm on Monday, 11 October, in the Mapua Hall. All welcome.

*Edited by Andrew Earlam (advertising) 540-2845, Terry Smith (editorial) 540-3203, and compiled by Barbara Mercer, 540-3022. Views expressed are not necessarily those of the editors. We aim to have the newsletter out by the 1st of the month. Deadline for paper copy at the Mapua Store and e-mailed items (preferred) to [coastalnews@mapua.gen.nz](mailto:coastalnews@mapua.gen.nz) is the 20th of the month. Small ads are by gold coin donation in the collection boxes, club notices free. Printed by the Tasman District Council.*

# Coastal Garden Group

We had a great turn out of members at the September meeting and welcomed four visitors. There were 14 apologies. First up to speak was Max with his garden notes which was by popular request on care of our roses. Max shared his spray and fertilizing programme which is his recipe for healthy, good-looking blooms and plants.

The guest speaker was local member and professional photographer Adrian Barrett who wowed the members with two audio-visuals of his award-winning photography and gave a very interesting talk

covering some of his history and an insight into some of his more unusual assignments and adventures.

Another of our members, Des Gill, gave a brief talk and demonstrated how he creates interesting concrete garden pots with a difference, decorated with pebbles, bits of coloured glass and whatever else he can find. He then kindly donated a finished pot for the auction.

The meeting closed with once again a yummy afternoon tea, followed by the usual plant auction which evoked some serious competitive bidding.

*Ngairé Barrett, secretary*

## Garden Notes

October has arrived at last! What can one say about September except wet, wet, wet? Which has made it very hard to get a good vegie garden under way.

I did have a good strike of carrots, but due to the constant rain and snails I have had to sow again. However, later sowings often catch up quite quickly.

Parsnips, which require a long growing season, have just been sown; later than I like, but as I usually have a poor run with these. I have been fortunate to be given seed from Des Gill who assures me gardeners who grow parsnips from his gatherings usually do well, so here's hoping for a better crop as parsnips bought from supermarkets are always a high price. Continue to plant and sow all vegies you choose from now on as the danger of frost is past.

Last year I was most satisfied with my sweet peppers grown in plastic bags, so have them all prepared for another season, and will add another lot of bags for cucumbers (non-trailing) variety, as I

never have success when growing them in the ground. The heat on the plastic seems to be an added bonus to their success.

Right now peppers are \$3.95 each, so growing one's own makes sense. If you have a very warm, rich spot you might like to try growing a couple of water melons. You could be pleasantly surprised how well you might do, and be the envy of your friends and family. Rich soil and plenty of water are the main requirements.

Apple, citrus, feijoa, fig, peach, pear, plum, persimmon and quince trees can still be planted for late summer and autumn fruiting. Good drainage is required for young trees.

October is the best month to enjoy visits to people's gardens. Do take advantage of this as one always can glean one or two ideas to add to your own... May October be a rewarding month.

*Barry Highsted*

# Fire Brigade

## August-September call-outs

Aug 14: Chimney fire at the Tap Ale House. No fire, someone had put oil on fire. No action taken.

Sept 2: Shed fire Tahi St. Well involved, brigade put out.

Sept 3: Damp down last call.

49 calls year to date



**Safety Tip – Change batteries in smoke alarms, check alarms are working**

Ian Woolfe, a station officer at Mapua, is leaving soon to train as a permanent fire-fighter in Rotorua for 12 weeks and on competing training will be based at Nelson Fire station. We wish him good luck in his new career. Ian will still be a part of Mapua when not working in Nelson.

## The Big Day



Friday, 22<sup>nd</sup> October, has been given for the official opening of the Ruby Bay by-pass. For details on this see Hugh Gordon's Letter to the Editor on page 8. Hugh has kindly agreed to cover the event for the *Coastal News*, and this will be run in our November edition.

# Rangers Rugby



The season has now finished. A successful prize-giving was held on Saturday 4 September. Well done to all the prize-winners!

Mixed Social Touch rugby has started up on Thursday nights under lights to keep up the fitness over the summer. Anyone is welcome to come along. Gold coin donation.

The Senior team is looking for a forward coach and manager for 2011. If you'd like to be involved please contact Mark on 0274 229 949.

Many thanks again to our 2010 sponsors: Moutere Inn, Richmond Superliquor, Speights, Richmond Hire, Upper Moutere General Store, George Perry, Pro Rugby, Sunrise Engineering and Acclaim Finance.

The photo is of the Past vs Present players' game, (Levi McPherson from the successful Waimea College U15 team side) steps Daniel Hyatt, (current Nelson Bays representative).



### **Community Health**

If the growth of interest and number of contributors to the *Coastal News* is any indication, then the health of the community is in good stead.

Compliments are well overdue to the editorial staff, all volunteers, I understand. The local 'rag' has come a long way from being a voice of the local Ratepayers' Association...to a point where the association no longer contributes.

It's an unhealthy reality that local body election candidates outnumbered the residents at the recent Moutere Ward meeting held at the Mapua village hall. Perhaps this is a reflection of the community's apathetic attitude to ho-hum local-body politics and ineffective councillors unable to contain escalating TDC expenditure (and rates rises).

The Health Centre anticipates increased usage in recognition of the socio-economic stresses that continue to be placed upon us. Can we cope, or do we go and live in Hope? Sustainability concepts seemed to have been lost in the bureaucratic translation. Have I lost you yet?

In any event, there's reason to celebrate our community's health, and what better way than by attending our SPRING FLING/BBQ, Thursday 21st October 5-7pm at the park...bring your neighbours.

After all, it's up to us "to keep the lifestyle humming".

*W K Darling, Ruby Bay*

### **Speed on Seaton Valley Road**

Winding down the Seaton Valley Road into Mapua, all those corners at the top are very frustrating. But once you get to the straight part it is foot-to-floor and let's try and get airborne over those three little humps. The only trouble is someone is going to get killed and I'll be really p——d off if it is me, trying to get in or out of our drive. That goes for eight or nine other families running the same gauntlet.

Seaton Valley Road is 80kmh these days. I know the signs are hard to see, but please make an effort. There are lots of cyclists and pedestrians in the weekends and the road is going to be quite busy when the new highway is opened. Modern cars are fast, comfortable and quiet and it is easy to forget how quickly your speed builds up. You will never forgive yourself if you hit someone.

*Mike Shirer, Seaton Valley Road*

### **Clean-up concern remains**

The Ministry for the Environment has changed its mind about cleaning houses around the Fruitgrowers' site in response to a question at the Health Department report follow-up meeting. The question was, "Is the dust still there?"

It's a concern because the filters on domestic vacuum cleaners, even a 12 micron Hepa filter, will not pick up the very small particles that are the most dangerous. It just puts them through the cleaner and up into the air again where they can be inhaled. These very small particles are the ones that the new chemicals that were being produced in the too-hot dryer stuck to best.

Of course people have cleaned their houses many times during and after the "clean-up" but it may be that ordinary cleaning was not able to remove the most toxic residue from soft furnishings such as carpets and lounge suites. The dust is also fine enough to be sandwiched in things like blind and curtain fittings.

The letter about the cleaning, publicised by Nick Smith (Minister for the Environment), was never sent to eligible householders separately. It has only been sent out as an appendix to the document that the Health Department posted out recently summarising the responses of the various government departments involved. It doesn't explain why there may still be real health value in cleaning houses at this point.

Don't assume you are not eligible because you have not received an individually addressed letter. Apparently the houses of the Ruby Bay residents affected by the building of the seawall had the outside of their houses cleaned as a matter of course when the work was completed. It would have been a fair and sensible thing to do in Mapua also.

*Jill Reade, Mapua*



### *By-pass—the Last Chapter*

Good News! Well ahead of the original schedule of March 2011, the Ruby Bay by-pass is scheduled to be open for traffic on 22<sup>nd</sup> October. “You won’t have anything to write about, Hugh” Yeah, OK, we’ll see!

The story of the Ruby Bay by-pass has quite a long and sometimes rather tortured history. In a way it is much like a biography which starts with a birth and a life and finally a death. Euphemistically known as “passing on” or “passing away”. Whatever. Death leads somewhere depending upon how you look at it. In the case of the Ruby Bay by-pass, it is shortly going to “pass on”. That’s a bit of a pun I suppose. At any rate it is going to die and just become a part of State Highway 60. We even know the date of its death—22<sup>nd</sup> October, 2010. That date is also a birthing date for the new road. It will be marked by a dual dawn blessing ceremony by iwi, with a ceremony at each end of the new road, in future to be known as “Te Mamaku Drive”.

The NZ Transport Agency will host a mid-morning ribbon-cutting ceremony at a site on the new highway near the Tasman end. This will be a chance for all those officially involved in the project to have their say.

Public announcements will be made before the day, such as time etc. Watch out for these if you are interested in attending this event.

#### **Around and about Mapua**

Take your pick. There is that much on the front burner in Mapua it could be a full-time occupation just keeping up with developments. Developments? What are you talking about? OK, here’s a few to think about:

**Waterfront Park:** Our Community Association is promoting the formation of a “Community Partnership Working Group” to bring together the “diverse groups for shared information, consultation and input”. That’s a quote from a letter to the Mayor of the TDC. Hopefully he will act on this request from the Community Association. Parking signs at the port now promised before Christmas. Yeah!

**Community Hall:** It is encouraging to note the subtle change in emphasis regarding the future of our Mapua Hall by the hall committee from a “new hall” and

nothing else to an in-depth examination of all the options. Richard Bullock spells it out in his letter in the September issue of the *Coastal News*.

**Mapua Health Centre:** Chris Short is to be congratulated for his September *Coastal News* front-page article on the future of our Health Centre. An important issue for our area. I hope his report has been widely read. It is a critical issue for all of us if we wish to have a good up-to-date health care facility in Mapua. I attended the AGM of the Health Centre on 21<sup>st</sup> September. It was not very well attended. Disappointing when you consider what is at stake. Liz Lock was honoured and recognised for her long 20-years plus association with the Health Centre. Thank you and well done Liz.

**Gateway Entry Sculpture:** Graeme Stradling’s Coastal Initiative artists’ group’s original and innovative stainless steel sculptures for the two main gateways to the old Coastal Highway now the Ruby Coast Drive is an ambitious project. It was kicked off by artistic inspiration and a generous donation of a huge sheet of stainless steel from Nelson Pine Industries. Good luck to this project.

**Amalgamation Petition:** Aldo Miccio, Nelson City Councillor, is persisting in his Nelson City/Tasman District amalgamation development model under provisions of the Local Government Act 2002. In my view much better cooperation and resource-sharing between the councils would be better than amalgamating. The concept is NOT at no cost to ratepayers and will NOT fairly represent Tasman District residents. Please sign the “Hands Off Tasman” petition to the Local Government Commission that is making the rounds.

**Down The Track:** By this time next month Mapua, Ruby Bay and Tasman will be going through a birthing process all their own. Being off the State Highway route means we will be well on the way to becoming a “destination” rather than a “passing-through” spot on the map. Interesting and productive things to come. Hang on to your hats!

*Hugh Gordon*

## St John Penguins make blankets

Thirteen members of the St John Youth Division in Mapua are busily making polar fleece blankets to give to patients at the Jack Inglis Hospital in Motueka. The blanket project is part of the St John Penguin "Caring Badge" which encourages the children to think about the needs of others: caring for the elderly, the young, the sick and even pets.

"The badge work focuses on becoming caring individuals in society, making good choices, and the importance of looking after each other", says Jane Andrews, Mapua Youth Division Leader.

The other badges in the Penguin programme for 6 to 8 year olds are Hobbies, Resourceful, Communications, St John, Safety, Healthy, Games and First Aid.

"This is an excellent programme for young people; however we require adult helpers to strengthen the division", says Jane. Anyone interested can contact Jane on 027 229 9080 for more information.

The Mapua St John Penguins meet at Mapua Hall on Tuesdays from 3.30pm to 4.30pm.

## Obituary





### Farewell to colleague and friend

It is with great sadness that we at Tasman Bay Vets say goodbye to our colleague and friend, Dr Chris McDonald. Chris was tragically killed in the plane crash at Fox Glacier in September. Many thanks to all of you who have sent flowers, cards and messages of condolence to the clinic. It has really helped us to get through this tough time.

Chris was the kind of vet that would tackle anything and there was not much he couldn't do. His greatest skills were in surgery, particularly orthopaedic surgery, and he patiently pieced back together many broken animals over the years. He was known to all those who worked with him in the clinic as Dr McBiff, a nickname which not so subtly alluded to his hatred of clutter and his propensity to throw stuff out. Sometimes you would go looking for something you had kept "just in case" you needed it one day, only to find that Chris had already chucked it out. Outside of work I believe he was known as the pussy doctor!

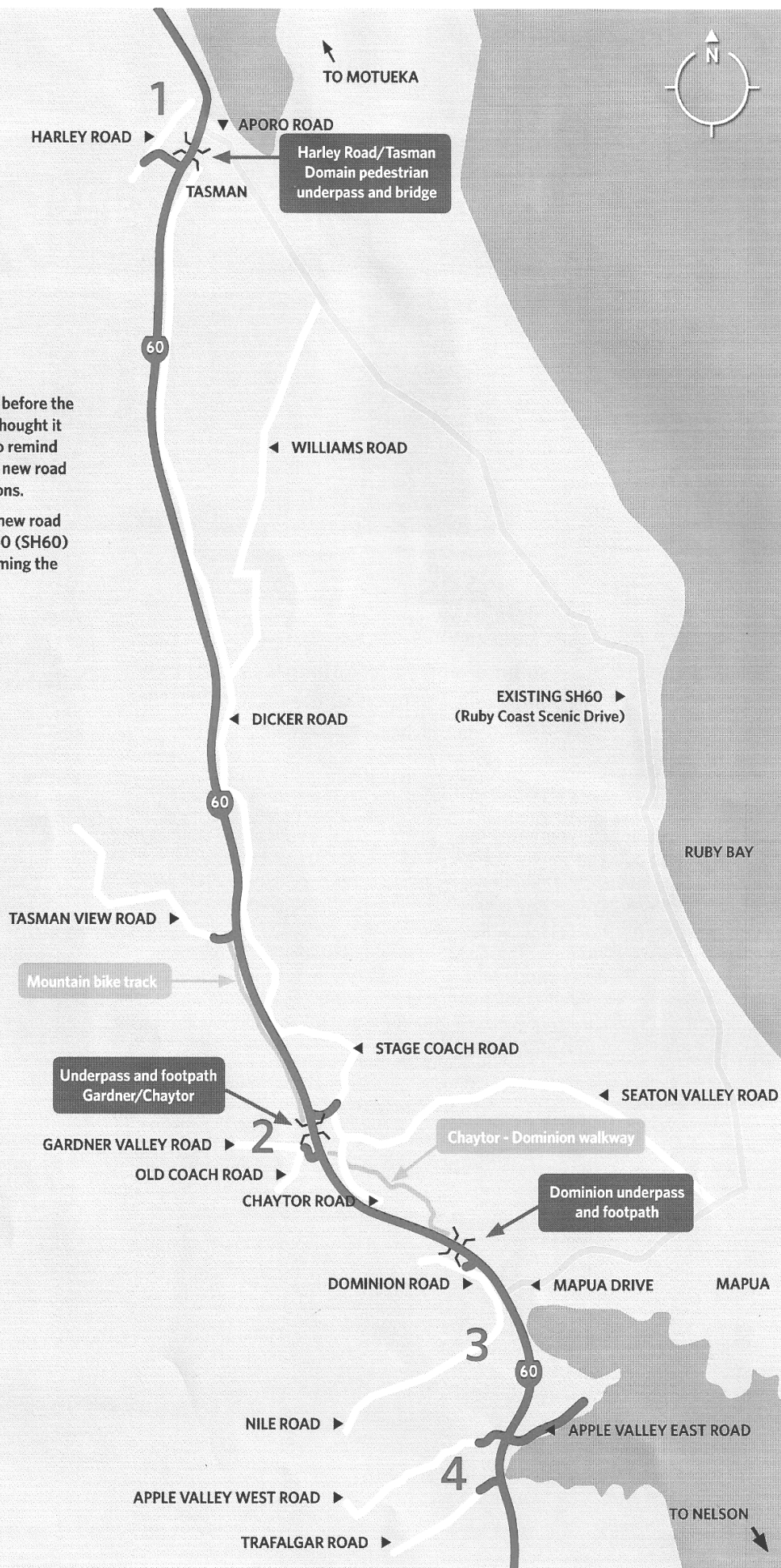
Chris is not one of those people you could ever replace but in due course we will find a new vet. In the meantime we are ably supported by Dr Alan White and by Dr Rachel Colpus, both great mixed practice vets. Many of you will also have met Dr Charlotte Foster who has been working with us in both our Motueka and Mapua clinics since May.

*Paula Short*

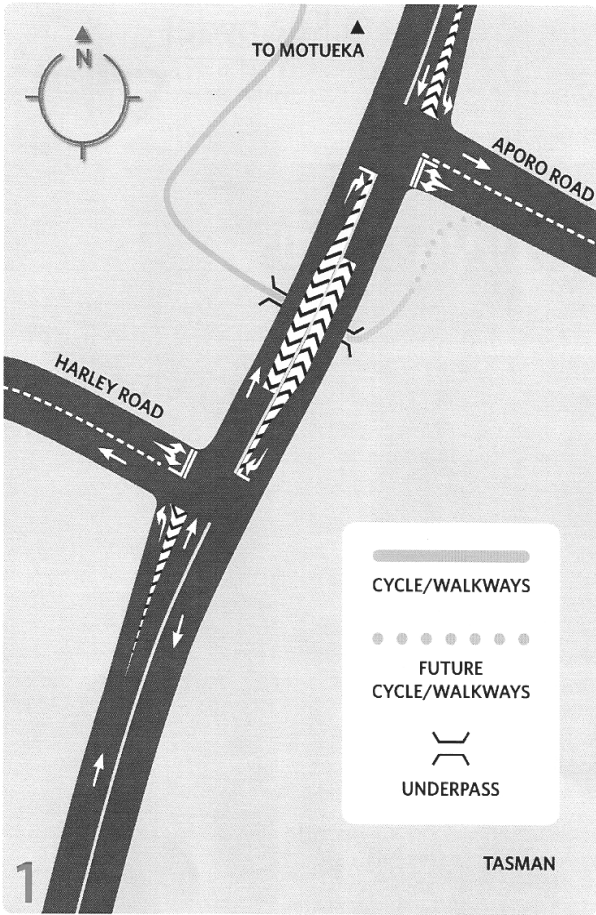
-  NEW BYPASS - THE COASTAL HIGHWAY
-  CYCLE/WALKWAYS
-  FUTURE CYCLE/WALKWAYS
-  UNDERPASS

The new bypass will be open before the end of the year so the team thought it would be useful and timely to remind everyone of the layout of the new road and its associated intersections.

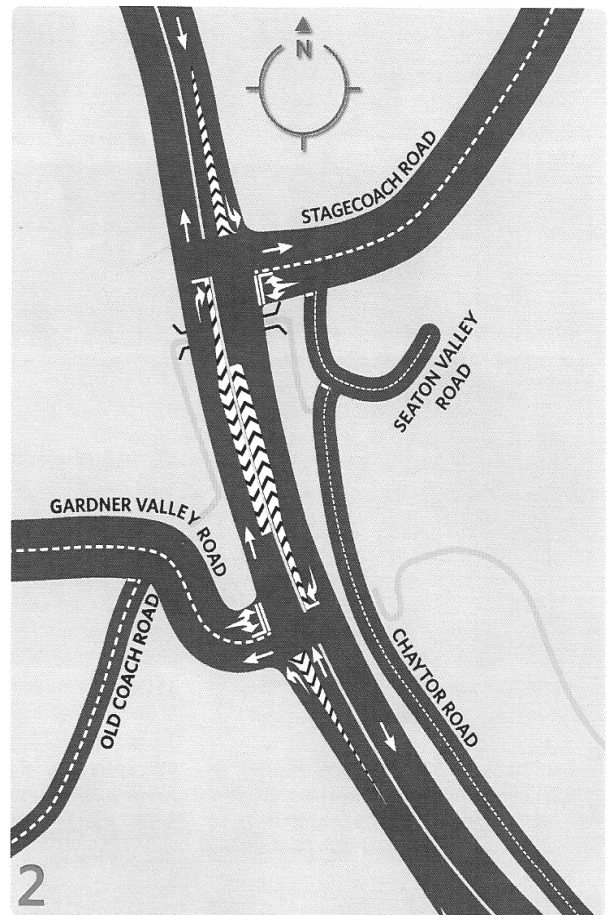
When the bypass opens the new road will become State Highway 60 (SH60) with the existing SH60 becoming the Ruby Coast Scenic Drive.



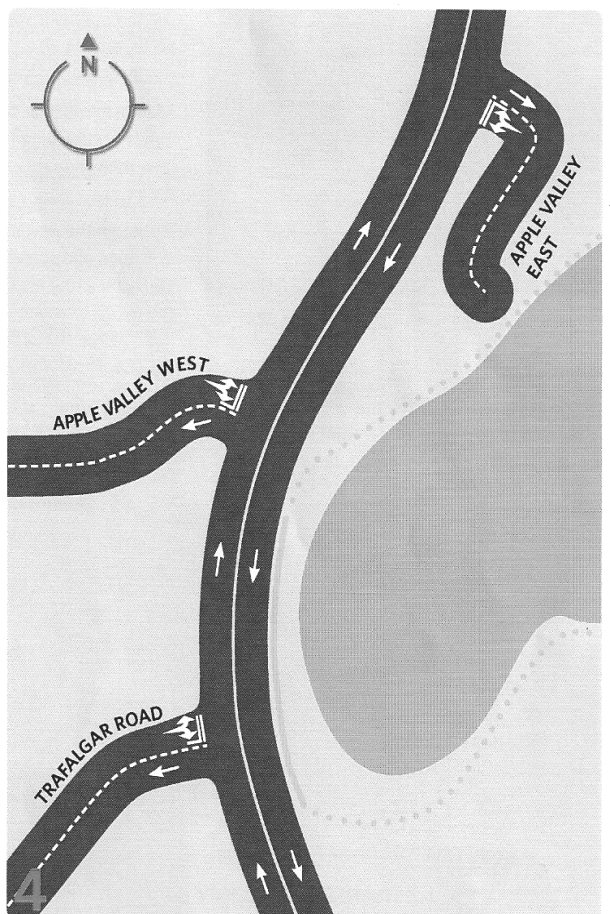
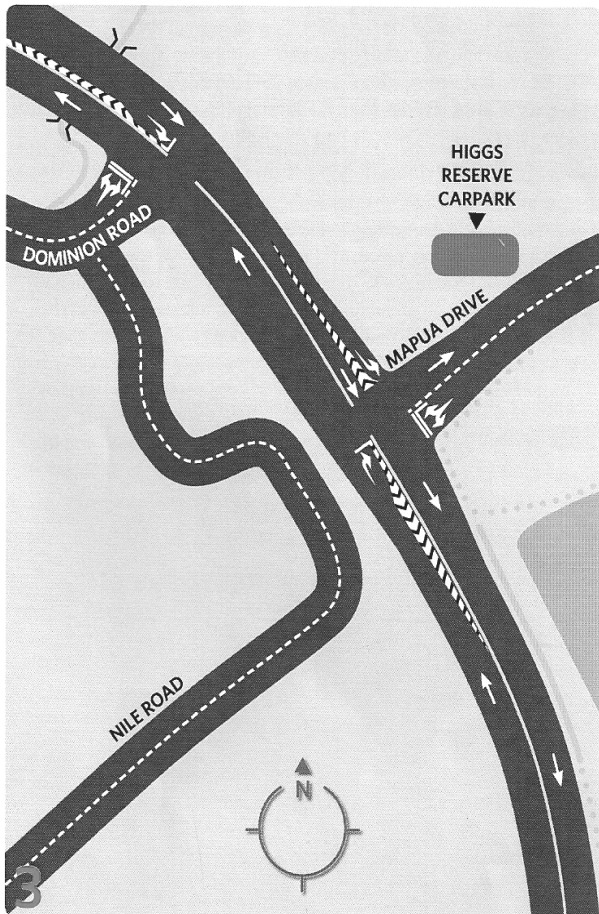




Tasman Village connection



Gardner Valley/Seaton Valley connection



# Mahana School

This term our focus has been on money. Every term we do a project to show what we have learned. However, this term we've done it differently. The kids from all three classes were asked to get into groups and discuss a business they would like to run, and create a product to sell. We worked on that every Wednesday afternoon and before long we were producing wonderful items we would never have imagined!

Then came the day we would put ourselves to the test. All of us had our products ready to sell so we gathered on the court and set up our stalls. We had a fantastic day and we all did very well. The stall who sold the most was 'Uzis and Daisies' run by Josh and Jack. They were selling recorded CDs and made a profit of M800 (Not real money, just paper money we called Mahanas.) Josh and Jack each received \$10 (real money) each as a reward.

We also have been very busy with the organisation of the school's twilight gala. This is being held on the 16<sup>th</sup> of October from 4pm through to 7pm. If wet, we will postpone it to Sunday the 17<sup>th</sup>.

At the moment, many of our students are discussing making their own stalls as a step up from the market day. They have so far brain-stormed a whole lot of ideas such as food stalls selling sweets, drinks, slushies, baking and game stalls like darts, 'the big dig,' and chicken run. We have also considered a kids corner where there will be story-telling, toys, face-painting and a bouncy castle. The students have got into groups and decided where and what stall they will be running on the afternoon of the gala.

We were all very excited about the Mahana School disco the 24<sup>th</sup> of September. Nearly all of the school helped organise it. There were ultra-violet lights, glow-in-the-dark face paint, raffle tickets, prizes for the best-dressed and food and refreshments for sale. For the kids it was a night to remember!

Also we have had a good time doing lots of other things like caring for one another and we think that we are all very lucky here at Mahana School to have such a friendly environment. Parents have been putting lots of effort into all these activities too, and we are very lucky to have such a supportive community.

*By Briar Smith-Waddell and Hannah Teale.*

## Postal Delivery

We can post you the Coastal News. To take advantage of this post \$15 with your name and address to Coastal News, PO Box 19, Mapua Store, 7048. Include your new postal code for rapid delivery.

# Mapua School

What a juggling act both parenting and teaching is!

As a child and grandchild of teachers, the intrinsic value of education has been well instilled in me. I find myself encouraging my teenagers to take educational subjects at school – to the point of offering to pay for night school to provide opportunities in training that they forego at school to be educated!

In my career, I focused on the training and development of staff. Here the battle was to target activities to personal career and development needs, so to re-train staff from choosing a course from a list, to identifying a need and then jointly designing a training and development solution. As a parent, it seems we are forever educating, training and developing life skills – a conglomerate of mini-goals and objectives with an umbrella target of achieving potential and finding happiness.

At the recent University of Canterbury open days, a management lecturer presented a mini-lecture to emphasise the need for understanding what makes a good manager. He demonstrated the incremental rate at which our world is changing and listed awe-inspiring and daunting statistics.

So where does all this leave today's parents and teachers and BoT members? How do we prepare our children to cope with exponential change? How do we balance this against preserving the intrinsic value of education? When do we factor in other requirements that we are legally required to? How do we make sure that we reflect our community values?

Reading the summary of activities for the term in the Principal's Report, reinforced that Mapua School is providing a myriad of experiences, focusing on key educational outcomes, looking for and receiving community input and, in doing so, helping our students to 'be all they can'.

But it is a balancing act, and there must be trade-offs, and there is a need for ongoing review to be sure we are on track. Now factor in how quickly our world is changing – and it seems we are left with moving goalposts – and so much to do and so little time! Life skills, professional skills and personal attributes will allow us to draw on education and knowledge and negotiate our way through this rapidly changing world. So here I am – back at the beginning – what a juggling act! And how do we remember why we are juggling?

*Lynley Worsley, School Trustee*

# Everything for the garden, and more

**W**e would like to introduce ourselves—our names are Aaron and Desiree Dunlop. We moved just over a year ago from Central Otago to the sunshine of the Nelson area with our three children who are attending Mapua School.

Last December we were fortunate to be able to obtain a small part of Mapua in Warren Place, and along with our Excavator Business and the Fly and Spider business decided that we could put all that we wanted to do under the same roof. Needless to say we now do Fencescaping, (Gramline fence that looks good on both sides) and to compliment everything decided to open The Shed Landscaping just to tie it all into place.

The Shed Landscaping has gravels, soils, rocks, barks, manure and plants for all your gardening needs. We can deliver or you can pick up.

Along with The Shed Landscaping we have trailers, log-splitter, plate/foot compactor, diggers, augers, truck and concrete-cutters for hire. Or perhaps you need a tree stub removed, some holes bored, or does your drive way need doing? Or you want a whole new look in your back yard. We will come and spend time with you to discuss the look you want and give you a FREE quote.

Our opening hours are Monday to Saturday 9am to 5pm and Sunday 10am to 1pm or prior arrangements can be arranged.

We would like to take this opportunity to thank you for taking the time to read about us. We look forward to seeing you

*Aaron and Desiree Dunlop, 15 Warren Place, Mapua.*

# Mapua Health Centre

If you go to [www.mapuahealth.com](http://www.mapuahealth.com) you'll find the Health Centre home page with our new logo, along with a menu that offers a range of options that cover how the Health Centre works – hours, services, staff, enrolment, fees, integrative medicine, hyperbaric medicine, a page for various articles and a Google map showing how to find us. We welcome feedback and ideas – [info@mapuahealth.com](mailto:info@mapuahealth.com).

One of the additional services that we offer is biofeedback. This is an interactive programme using cardiac coherence to help you improve your general health and for specific health-related conditions (including depression, anxiety, and asthma). It's based on how the variability of the heart rate (HRV) is very important to health and how a number of simple practices, including breathing and stress-reduction exercises, can improve HRV and general well being.

One of the minor hassles that many suffer from time to time is blocked ears. Although our ears are continuously cleaning themselves by moving a thin layer of wax to the outside with debris on it, sometimes the hearing canal gets clogged up with wax. It may then be necessary to use some drops to loosen the wax (eg, Cerumol or Waxol from the chemist). Only if this doesn't work is it necessary to consider getting the wax

syringed out and an appointment with the practice nurse can be organised. There is a special service at the hospital ENT department that offers ear toileting (using a specialised suction device). For more information please contact the practice nurse.

News from the medical mags: we know that NZ soil is low in selenium and recent studies suggest that selenium supplementation may have a role in preventing cataract formation and age-related maculopathy (retinal damage), *NZMAJ* 11 June 2010. It's also important for bones, heart, immunity, thyroid function and dealing with inflammation generally. You can get selenium from fish, poultry, eggs, imported nuts and legumes, and the food with the most is Brazil nuts (you only need 1-3/day). Other good things for eye health are lutein (found in carrots, egg yolk, orange and yellow fruits and vegetables), *Curr Eye Res*, 2010, and fish oil, *Am J Clin Nutr* Dec 2009.

The after-hours service is now being run from 96 Waimea Road, Nelson. If you ring Mapua Health Centre after 5.30pm weekdays and any time during the weekend your call will be diverted automatically to the Nelson Regional After-Hours Service. If you have an emergency please dial 111.

National and global health promotion events for the month include the following:

Sept 27- Oct3	Save the Children Fund Appeal Week	<a href="http://www.savethechildren.org.nz">www.savethechildren.org.nz</a>
October 1-31	Breast Cancer Awareness Month	<a href="http://www.nzbcf.org.nz/home">www.nzbcf.org.nz/home</a>
October 1-31	Save Our Sight Month	<a href="http://www.nzao.co.nz/">www.nzao.co.nz/</a>
October 1	International Day of Older Persons	<a href="http://www.un.org">www.un.org</a>
October 4-10	Mental Health Awareness week	<a href="http://www.mentalhealth.org.nz">www.mentalhealth.org.nz</a>
October 17	International Day for Eradication of Poverty	<a href="http://www.un.org">www.un.org</a>
October 20	World Osteoporosis Day	<a href="http://www.bones.org.nz">www.bones.org.nz</a>
October 16-31	Bandana Week (Canteen)	<a href="http://www.canteen.org.nz">www.canteen.org.nz</a>
October 22-28	Plunket Society Appeal Week	<a href="http://www.plunket.org.nz">www.plunket.org.nz</a>
October 24	United Nations Day	<a href="http://www.un.org">www.un.org</a>
October 26-1	Blind Appeal Week	<a href="http://www.rnzfb.org.nz">www.rnzfb.org.nz</a>

# MAPUA COMBINED PROBUS

The Probus Club of Mapua and District celebrated its tenth birthday in September. Peter Butchart introduced Euan Grant of the Rotary Club in Motueka, who is also the chairman of the Districts Probus Club Committee. His area extends from Rangitata in Canterbury north to Marlborough and Golden Bay with 96 clubs and over 10,000 members. He was involved in the forming of the Mapua Probus Club.

The club's guest speaker was Rodney Haines on the subject of "Life Challenges". Rodney's challenge began for him at birth, being born with no arms. His parents devoted most of their time in raising Rodney, often at the cost of the rest of the family. By the age of five he had developed the skill of writing with his feet. After leaving school he trained as a lawyer, and opened a practice in Richmond. He was later elected as chairman to the Nelson Hospital Board. From there he took on the position as general manager for the Ngawhatu and Braemar hospitals.

Rodney was asked by a nurse at Ngawhatu if she could keep a dog at the hospital. He thought having animals on site would be beneficial to the patients' wellbeing but it was not official policy to have animals on hospital property, so Rodney took down the hospital sign at the gates prohibiting animals. This gave the staff more opportunity for animals to be cared for on the grounds. Rodney told several other interesting stories about his time at Ngawhatu.

Rodney's first visit to Mapua was in 1962 in his small sailing dingy. These were the early days of his main hobby, building and sailing boats. Rodney and his wife, over the years, have extended their sailing to France, Germany, and many of the canals of Britain. They also spent several weeks sailing the Murray River in Australia. His other amazing interest was sky-diving. His wife and two children booked them in for the assisted parachute jump for a birthday. Because of his handicap the sky-diving instructor wouldn't accept him. At a later date he was able to persuade another instructor to dive with him to do his one and only sky-dive. After that experience he was more than happy to stay with his boats.

The rest of the meeting was devoted to a sing-along of some popular 1940s and 1950s songs, led by George Ballantyne playing on his electric keyboard. A magnificent afternoon tea, prepared by the ladies of the committee, was laid out on several tables, the centerpiece being the birthday cake supplied by Joy Sharman. The cutting of the cake was done by secretary Margaret Butchart and Euan Grant.

*David Higgs*

## September Probus Outing

For the September outing members of the Mapua & Districts Combined Probus Club enjoyed a leisurely lunch at the Brightwater Tavern before visiting three businesses in the region.

Dan, at McGlashen Pottery, gave us an enlightening tour of his establishment, showing us the various processes involved in producing their very attractive range of products. For someone brought up in the days of potters' wheels and the production of round bowls and mugs, the moulding of plates, bowls and other ornamental items which mimic sea shells or carved dishes was quite fascinating. The use of compressed gas to force a mould to shape the clay was quite interesting although I suppose that it is common practice today.

We were shown their glazing processes and given a good description of the firing in the kiln together with the precautions needed to ensure that the item being baked did not crack. Clearly the end product was a very fine item and worth the care taken.

Most of the group then went to Reco Wrought iron in Ellis Street and spent some time checking out the furniture and decorative work made there. Again the skill of the craftsmen was very apparent.

The highlight of the day was a visit to Holer Diamond Tools in Hope. This organisation, with its head office in Hope, has five branches in other New Zealand towns or cities and produces concrete-cutting tools and equipment. We were greeted warmly by Al Hungerford, the national sales manager, and provided with coffee which we drank while Al gave a very interesting PowerPoint presentation on the company's history and its product range. He interspersed his talk with a number of questions and a correct answer gained the answerer a tee shirt, beanie, sunglasses or beer holder as a prize. The company designs and builds equipment and one that particularly stood out was a machine to drill 16 holes simultaneously in a concrete rail bed to mount sleepers. It took the company one month from concept to delivery for this device. A tour of their spotless workshop (working) showed the mounting of diamond cutting heads on saw blades and provided us with a fascinating insight into the production of specialised cutting equipment.

*John Sharman*

# Sam's Spam

October 2010

**H**i everyone. It seems that cyber criminals are busy in New Zealand. See below about two different scams doing the rounds.

## **Earthquake scam**

The Christchurch earthquake is being used by criminals wanting to cash in on the disaster. Fake charity emails are being sent so beware before you send anything. This same tactic was used after the Haiti quake.

To ensure that donations reach those who need it, avoid following links to 'charity' sites in emails or in instant messages.

To be on the safe side, find out the address of the charity you want to support and type it directly into your browser. For example, the Red Cross is organising a lot of the relief effort. To make a donation to the Canterbury Earthquake Appeal, go to [www.redcross.org.nz](http://www.redcross.org.nz)

This will help you avoid being taken to a "spoof" site—these look like legitimate sites but siphon off the money.

Do not fill out forms that ask for personal information or passwords. Reputable charities are unlikely to ask for these sorts of details.

## **Identity theft through Facebook**

A *New Zealand Herald* article says that Facebook is being used to steal bank and credit

card account numbers and identities from unsuspecting Kiwis.

"Scammers will set up fake profiles with a believable look to it and add you as a friend. The information on most people's Facebook page is enough to steal an identity," says fraud expert Chris Taylor.

Scammers are also posting photos to people's profiles with a "Trojan" virus attached. When the image is opened, the scammer is sent records of everything typed into the keyboard, including user names and passwords for internet banking.

[http://www.nzherald.co.nz/email/news/article.cfm?c\\_id=188&objectid=10674468](http://www.nzherald.co.nz/email/news/article.cfm?c_id=188&objectid=10674468)

**Free stuff:** Google Scholar <http://scholar.google.co.nz/>

Google have another free new feature. Google Scholar provides a simple way to broadly search for scholarly literature.

- Search diverse sources from one convenient place
- Find articles, theses, books, abstracts or court opinions
- Locate the complete document through your library or on the web
- Learn about key scholarly literature in any area of research

# Under The Bonnet with Fred

## Colin's 1954 Austin-Healy 100—a real blast

The name Austin is one which most silver-tops in Mapua will remember, from the A30 made for narrow streets of English villages to the A95 Westminster, a good-size car designed to transport families on long journeys in the Australian outback.

Donald Healy, a successful race car driver in the 1950s, designed sports cars in association with Nash, Austin and Jensen. Lord Austin of the Austin Car Company saw Donald Healy's 1952 car design at a show and instantly liked it. He knew it would have appeal, especially in the American market, and so the Austin-Healy was born. Healy's design and Austin's engineering sold a sports car that was guaranteed to do 100mph. What do you name it? Austin-Healy 100. Making use of existing Austin running gear, the car is still very popular with racing and sports car enthusiast. All of Donald Healy's cars are now very collectable.

Colin has to be admired for his dedication to restoring the Austin-Healy as he bought it as an abandoned project, and judging from photos he showed me

he was a brave man. Both front guards have been moulded from sheet metal and he remade the chassis with help from friends.

The body on this car is what it's all about. Was its design meant to attract male buyers or a female companion for a sporty experience? This car is low, the top of the windscreen being only 1.17m and highest point on the body below my waist. The front has a cheesy-smile, chrome vertical-bar grill with a "100" badge attached to assure owners this car will do 100mph. A single bar chrome bumper curves neatly across the front. The lights are up high as they need a bit of height on the low body. Sides roll slowly down to the wheels with the bodyline having a nice, long slow curve from the front lights down to a hip just behind the front seat then up and curved around the boot. Looks a bit typical of sports cars of the 50s but never fails to please the eye. The spare wheel is recessed nicely in the boot lid. Some clever thinking by Austin-Healy—there is an isolating switch inside the boot to stop the ignition from being hot-wired while the cars is unattended.



The interior has nice leather bucket seats piped to match the fire-engine red colour of the car. The dash has a centre row of small gauges, all at eye level, and a speedo set left of the steering. The gear lever is offset left of the gearbox housing, apparently to extend the reach for the gear lever in the confined interior. Colin had to buy a whole Austin A90 to get an original spoked steering wheel when restoring the car.

The engine is really an Austin A90 motor hotted up: 2660cc, four-cylinder high compression head, twin 1½in SU carburettors, with 12 volt electrics that require two 6 volt batteries—a bit of a mystery. Colin has upgraded the original three-speed gearbox to a four-speed with overdrive, and added a hydraulic clutch.

It has coil suspension on the front and leaf springs on the rear. Massive 11in drum brakes with nice traditional quick-release spoke wheels and 165x15 Cavallino tyres. Simple under the bonnet except for adjusting those SU carburettors. Length 3.850m, width 1.537m, 0-60mph 10.3 seconds, and top speed 111mph. 94 hp and only weighing 938kg makes a fast car. A bit thirsty for a small lightweight car at 14.4mpg.

Colin, my old Cadillac does 26mpg, but won't go as fast as yours.

Colin lowered the windscreen to speed level. The engine started with a nice instant brrrrm which stayed with us for the journey. Where're the seat belts? "Fred, this is a 1954 sports car. They don't have safety belts." I had a instant feeling of excitement, or was it insecurity, as we roll down the drive in confined seating with breast-height above the windscreen and the only thing to hang on to was a small hand grip. We accelerated down Pomona Road to the highway, hair wafting all over the place, giving me a taste of what was about to come. Turning left on to the Coastal Highway Colin was still in top gear and the Austin-Healy pulled away easily. Heading for the Bluffs the car was now pulling 60mph and accelerating as Colin put the car in overdrive. Around the first right and then the lazy left still accelerating. The top half of my body was getting colder in the early spring air as we went faster and my bottom getting warmed by the heat of

*contd:*

*Under the Bonnet contd:*

the engine inside the cockpit. I think there was about 15deg difference, my hair was really wafting, eyes watering and by now my ears were flapping, adding more noise. I was starting to look for that seat belt which I knew was not there. Then around the hard left at the top of the Bluffs and away again.

I finished my interview with my hair standing on end feeling a little insecure but it was a real blast. I

now know why you see the sport car enthusiast with goggles and helmets on. Colin, the Austin-Healy is a tribute to your car restoration skills and the ride in the car really was a blast.

PS: As I drove home I kept checking for my seat belt.

*Fred Cassin*

---

## Top Team Takes Off

Get your mates together and come battle it out for the Top Team Award.

“This year’s Top Team competition is going to be bigger and better than ever”, said organiser Judene Edgar. Due to the popularity of last year’s competition, this year it has been expanded to include a Junior Competition as well as a Senior Competition.

“We included a couple of kids’ teams at the Murchison Heat last year, and it was so popular that we decided to expand this year’s competition to have an entire Junior Competition”, she said.

The Junior Competition is open to children in Years 4 – 8 and the Senior Competition is open to all ages.

“We have some great new games as well as some of the old favourites,” says Nicole Bingle, Sport Tasman’s sport & recreation co-ordinator. “We have already had a number of schools express interest in entering teams. This is a great opportunity for some friendly inter-school competition and fun physical activity.”

So get your teams of 6 – 8 players together and enjoy a day of fun and friendly competition using your speed, strength, skill and a little bit of cunning to come out on top.

Crazy costumes and the competitive kiwi attitude are a must. Businesses, sports clubs, families, friends, adults and children – get your team together for this year’s event.

Bowater Motor Group is the major sponsor of Top Team 2010 joining heat sponsors More FM, Sprig & Fern Brewery, New World Motueka and finals sponsor City Fitness.

The heats will be held at Motueka Recreation Centre on Saturday 16 October, Saxton Field on Sunday 31 October and Murchison Recreation Centre on Saturday 13 November. The top four teams from each heat will go through to the finals at Moutere Hills Community Centre on Sunday 12 December.

For entry forms and more information go to

[www.tasman.govt.nz/topteam](http://www.tasman.govt.nz/topteam) or phone Sport Tasman on (03) 546-7910.

For a sneak peek of some of the fun and antics from last year go to <http://www.youtube.com/watch?v=LwFSshiktuM>

So do you think you have a team that’s got what it takes? For more information: Judene Edgar, Ph. (03) 544-1927, Mobile. 021 541

927, E-mail [Judene.edgar@clear.net.nz](mailto:Judene.edgar@clear.net.nz)





## Australian duo visiting

You don't have to go to the city to enjoy a slice of the Nelson Arts Festival; it's coming to a town near you!

The festival is touring the visiting Australian duo, The Baker Suite, a duo with a sophisticated French café sound, created by singer John Baker with Gayle Buckby on accordion.

Nelson City Council festival creative director Annabel Norman said she selected The Baker Suite to tour regional venues as something a little bit different, but with a wide appeal.

"We've never toured an international show before, but with support from the Tasman District Council we're able to offer Tasman residents a real treat," she said. "The Baker Suite is based in Adelaide and names among its influences some of the jazz greats such as Miles Davis and Chet Baker – but with other influences including Burt Bacharach, The Beatles and Norah Jones they will appeal to a fairly wide audience,"

"The rich, lush sound of the opening moments of this performance drew the audience in and held it until the standing ovation and cheers for more at the end. This performance was an oasis for the romantics, a great end to a hectic week, a great show."—Jim Mack, *The Independent Weekly*.

See The Baker Suite at these venues:

Granary Festival Café, Saturday 16 October, 8.30pm

Neudorf Vineyard, Sunday, 17 October, 2pm

Tickets for both these shows at Everyman Records ph 548-3083 or [www.nelsonartsfestival.co.nz](http://www.nelsonartsfestival.co.nz)

Other shows coming to Tasman are Poetry in the Vineyard with Elizabeth Smither and Rachel Bush at Woollaston Estates on Labour Day and gypsy violinist Antal Szalai at Woollaston Estates on Sunday 17 October. Tickets for these are at Everyman Records or [www.nelsonartsfestival.co.nz](http://www.nelsonartsfestival.co.nz)

## Hills Community Church

**Happening @ Hills**—we are a community-based, multi-denominational church with historical roots in the Anglican, Presbyterian, Methodist and Pentecostal traditions. We offer both traditional and contemporary worship in an informal and relaxed style. Visitors and newcomers are most welcome.

**Sunday Worship:** Traditional service 9:00am, Contemporary service & "God's Garden" for Kids 10:30am; Holy Communion celebrated at both services on the 2nd and 4th Sundays with morning tea between services. First Sunday of each month: one service @ 10:30am followed by a shared lunch.

1st & 3rd Tuesdays: 12:15pm—NZ Prayer Book Communion service followed by intercessory prayer

Wednesdays: 10am-noon—Kidz n Koffee Open to parents-caregivers-pre-K kids—a great way to make new friends!

Fridays: 10am-noon—Craft n Coffee—learn a craft & share a laugh! Open to all, crèche provided

## Moutere Hills RSA

The September meeting of the Moutere Hills Sub-branch of the RSA was held on 13 September with 17 members attending.

The members met at The Tap at midday for a very pleasant leisurely lunch before adjourning to the meeting room at the corner of Aranui Road and Toru Street for the regular 2pm meeting. The lunch was viewed as a success and we plan to repeat this periodically.

Major matters arising at the meeting included a lengthy discussion on the way in which we can provide some Christmas cheer and support for the widows of past members, and the appointment of a new secretary on the decision of Frank Gibbison to relinquish the position.

The Moutere Hills Sub-Branch of the Nelson RSA is still keen to receive donations of or the loan of memorabilia or medals relating to conflicts in which New Zealanders served. These items would be displayed in cabinets provided for that purpose in the library.

We are also seeking new members from returned or service people, or anyone else with an interest in furthering the aims of the RSA.

*John Sharman, secretary*

# MAPUA PLAYCENTRE

September was a relaxing wind-down to the end of term. We have been chilling out with one of our regular favourites—baking. Yum. Much is eaten before it reaches the oven and at least one person under two is guaranteed to get covered head-to-toe in flour. We have also been creating a few science experiments. You may have heard the rumbling as the volcano in our sandpit erupted.

One of my highlights this month was a visit from a woman in the community who bought in some old cards and images for the kids to use. It was so nice to be thought of, by a mum who has been there and done it. It was a lovely gesture and much appreciated.

Next term we want to develop our garden, so if you have any extra plants, cuttings or anything we would love you to come and visit us on a Monday or Friday morning. Pop in for a cuppa on delivery. We will also be having a working bee on Saturday the 16<sup>th</sup> of October from 10am-1pm, so if you can offer a hand we would love to see you, especially if you have are a handy man/woman as we have lots of “fix-it” jobs.

This is a little bit of inspiration I got from “*The Parenting Place*” who send out a great weekly email of ideas for parenting (check out their site). I thought I might share this one with you:

## **What makes your kids happy?**

“Family is everything; after all, they’re the ones who know you inside out and still love you in spite of what they’ve discovered! Do you know your kids inside out – what their favourite things are, or what makes them happy?”

The simple things that bring them joy may seem insignificant, but they matter to children, and teenagers too. Unlike our kids, sometimes us ‘grown-ups’ forget how important it is to sometimes do things just to make ourselves happy. Surprise your kids occasionally by going somewhere or doing something that is purely about being happy – whatever that means to your child.”

Playcentre kids are happy kids, because whilst we offer support to one another what we do best is offer a place for you to hang out, make a mess and have FUN with you kids. You are so lucky to have a Playcentre in Mapua. I have to drive all the way from Tasman to attend because we don’t have anything like this in our community.

Please help us keep Mapua Playcentre. How can you do this? Come along, bring your kids and help us grow great families who contribute to our community. Under twos are FREE!

*Cheers, Maia, Mapua Playcentre*

# BOOK REVIEW

Noah's Compass (2009) by Anne Tyler, available in the Mapua Library, is reviewed this month by Sue England

If you've never read this author, start now," says screenwriter Andrew Davies and I couldn't agree more. Anne Tyler has a canny knack of drawing you in to her simple plots with amusing and often tragic characters, people that you instantly relate to and compel you to discover more. She is perceptive, descriptive and wise. If you have never read her classic, *The Accidental Tourist*, it is a must. But I digress; this review is about *Noah's Compass*, Tyler's latest offering.

Throughout the book I was expecting a character called Noah to appear ... with a compass. Wrong! The reference is to the biblical Noah bobbing about in his ark with no compass, rudder or sextant. A man whose sole intent was to stay afloat, drifting with nowhere in particular to go.

Meet Liam Pennywell, a 60-year-old schoolteacher who has just been 'let go' as his department at St. Dyfrig's is downsized. This triggers a sequence of events that make Liam realise that, like Noah, he has been afloat all his life. Is this enough?

Liam moves to a small country apartment and on the first night in his new home, he goes to bed early and wakes up in a hospital bed. The medics tell him that he has concussion. The police tell him that an intruder entered his apartment through an unlocked window. His family, ex-wife Barbara and three daughters, tell him that he is hopeless. Liam can remember nothing and determines to discover what happened.

Liam returns home and blunders on in his own way despite the worry and intrusion by certain family members. He continues to meet a 'rememberer', someone who will enable his reclamation of the alarming gap in his life and so we are introduced to Eunice Dunstead. Her willingness to help leads to passion, love and secrets. Liam is challenged by the strange turn in his life and reflects on the past and his failings.

We leave Liam Pennywell in new employment with Miss Sarah and a class of three-year-olds and his final insight. Maybe a compass is necessary after all.

## Library Hours:

Tuesday, Friday & Saturday 2pm – 4:30pm  
Wednesday 5pm – 6:50pm  
Thursday 10am – 12:30pm

# MAPUA LIBRARY



Thank you to those people who supported our recent second-hand book sale. It was unfortunate that the weather interrupted proceedings earlier than expected. However, as we still have a good supply left we will offer you another chance to purchase a good cheap read around holiday time at Christmas. Note too that there are often duplicates or surplus to our stock, for sale at the library.

From time to time, Richmond Library very generously lends us large-print books and we have recently received further items; they're already on the shelves. We have many readers who appreciate this medium and we are very grateful to Richmond Library for supplementing our stock in this manner. We are of course, always buying our own large-print books but this gesture certainly helps to keep our readers happy.

The library is now working on the computerised system—Koha—and all our volunteers have been undergoing training in the system. We thank you for your patience during our first few weeks of operation. It is fair to say that there was some initial trepidation amongst our volunteers but now that the system is up and running and they have had the chance to use it everyone is feeling confident and enjoying its benefits. Positive feedback from our readers is also encouraging and we look forward to providing more services (and benefits) in the future. It is now possible to place "holds" on books and to search our catalogue electronically rather than flick through the catalogue cards. Ask a staff member to show you the system.

Our team members who manage the overdue books are delighted with the new reporting system; not so delighted with the recent number of 'overdues'. The numbers here have grown; so we would ask that you endeavour to return books by the three-week due date which is still stamped in the back of the book. You'll still receive a helpful phone reminder from Hugh, (I'm sure some of you would miss his calls!). Soon, those on email will receive email reminders. While we don't charge for overdue books, we do appreciate a small donation, which is used for the purchase of more books. So, if your book is overdue don't forget that our pink pig likes to be fed an overdue donation. He has been looking rather skinny lately.

Last, congratulations to local Tasman resident Rhea duFresne-Mann who won the Nationwide Book Council competition with her review of Kate de Goldi's book, *The 10pm Question*. Well done Rhea, we had featured your review in the library when it was first published.

Dot Moriarty

# Clothes Swap

*UPDATE on the Mapua Big Night Out  
Clothes Swap for Women*

**Sat 6 November, 7:30, Mapua Hall**

It's just over a month to go to the Mapua Big Night Out Clothes Swap! Hopefully you've diarised the night, you've organised a group of women friends to go with, you're all set to get your tickets and you're now sorting through your spring / summer clothes for those pre-loved quality fashionable items.

Remember - as well as having a social night out as you score some new clothes, you'll also be supporting fundraising as well as recycling. Out of your \$20 ticket, \$5 will go to the supper providers - Mahana School, just over \$5 will be needed to cover costs and the rest will go towards community environmental projects - we'll update you on the night.

## **A few reminders:**

• Bring your ticket and your clothes to the Mapua Hall between 3:30-5:00pm on Sat 6 November.

• Please only bring fashionable spring / summer items that are clean, in great condition with no marks, missing buttons, pills, pulls, rips, missing zips etc - hang-able clothes on hangers please.

• Items can include quality clothes, scarves, bags, shoes - no underwear, sleepwear, swimwear or jewelry.

• We will record from 1 to 10+ on your ticket the number of clothes you bring.

• Bring as many items as you like but you can only take a maximum of ten items away - more to go round.

• If you don't have clothes to swap, you can still take some home if you want to for an extra cost (i.e. on top of your ticket price): \$5 for 1-2 items, \$10 for 3-5 items, \$15 for 6-10 items.

• If you want to treat your ticket purchase like a donation and come just for the social occasion, that's fine!

• Un-swapped clothes will be donated to charity - you can't ask for your clothes back, sorry.

## **Swap begins at 7:30**

Things to do

• If you haven't already, grab your tickets fast as there are limited numbers. Available at Tessa Mae's and Tasman Bays Vets, tickets are the same price as last year - \$20 if you buy them in October. After that they're \$25.

Your ticket entitles you to a glass of fruit-laced bubbly (licensed premise conditions apply) or juice, complimentary supper and a luxury hand-made chocolate truffle. Top ups of the bubbly will be available for a small extra cost.

• Bring plenty of cash with you for extra drinks and purchases.

• If you plan to drink, please organise a sober driver, someone to pick you up, or walk home with friends.

• ALSO - let us know, please, if you can lend us your full-length mirror for the event - we'll need lots! Contact Adele on 5402793 or Paula on 5403394.

This should be another really fun event. Make the most of this opportunity for you and for your

# PANZ

The last two months were a busy time for us at PANZ. We had some visitors join us for a session of “pastel as a painting medium” and some of our regular members gave concentrated demonstrations on painting glass, clouds, skies, dogs (eyes/noses), cats (eyes/noses), which were all well received. We will continue in this manner until close of year at the end of November.



Glenys della Bosca from Impressions in Richmond, will be conducting a “Back to Basics” session with us on the 28th September. We will be able to try out all things pastel related so it should be a good morning. If you are at all interested in trying out pastels, this would be a good day to join us and you would be most welcome. 9am start.

We also have a framing workshop with Lance Trolle’ coming up on the 30<sup>th</sup> and 31<sup>st</sup> of October at the Mapua hall. \$65 for the two days, 9am to 5pm. Non members welcome to join us. First-in, first-served.

Congratulations go out to members Tony Allain, Judy March and Glenys Forbes who all received prizes at the “Positively Pastel” art exhibition held in Invercargill recently.

PANZ Nelson area meets every Tuesday morning at the Mapua Hall 9am to noon. Visitors welcome. Enquiries to Glenys Forbes, ph 540-3388.

# MAPUA Bowling Club

Unfortunately play for the new season has been delayed due to unsuitable playing conditions on the green. We expect to start our new season in early November. We are actively seeking new members. If you are considering giving lawn bowls a try you would be very welcome. Bowls and coaching are available for beginners. Feel free to contact our president Arnie Arnfeldt, phone 540-3032, or our secretary Jean Daubney, phone 543-2765, if you are interested, or just come along on Tuesday, Thursday or Saturday at 1.15pm.

League Bowls will start on January 10 next year. This has proved very popular in the past It is held on Monday evenings 6pm-8pm. Bowls are available—all you need is flat footwear so arrange a team and come along for an enjoyable evenings sport. Contact Don or Vicki Sixtus, phone 540-2960 for further information.

*Maurie Daubney*

# Tapawera Art Trail

The artists of Tapawera and the surrounding districts warmly invite members of the public into their studios; come and see us at work; see a selection of finished pieces and works in progress; come and talk to us about our materials, techniques and inspiration.

Many of the artists in the Tapawera area are practicing full or part-time professionals and many of us have won awards in national and regional competitions. Our collective work ranges from paintings executed in oils, acrylics and watercolour to sculpture, printmaking and textiles.

The Tapawera Art Trail runs for three days over Labour Weekend (23–25 October) with most studios being open from 10am – 5pm daily. Delicious and good value food and refreshments are available at the Hidden Café (just outside Tapawera).

For further information or a copy of the Trail map and artist guide please email: [tapaweratrail@yahoo.co.nz](mailto:tapaweratrail@yahoo.co.nz)

# Noticeboard

The 4th **Spring Fling** Mapua/Ruby Bay Community BBQ at the domain. Join us 5-7pm Thursday 21 October for a free evening of fun and games. Enjoy a sausage, homemade lemonade and an ice cream. We encourage all members of our community to come, have fun and make connections with others. You can be single, no children, on the gold card, a family, it doesn't matter. Just come along.

**Haven Lioness Garden Trail.** Sunday 10 Oct, 10am-4p.m. 10 interesting and new gardens in the Richmond, Hope & Brightwater area. Tickets \$10 from Baku in Richmond, Bay Nurseries and Strawbridge Cafe in Stoke. Proceeds to the Blind Foundation for the purchase of a talking book machine.

**Junior Tennis Coaching:** lessons available, starting Term 4, Fridays at Mapua Tennis Courts. **Adult Coaching:** learn or simply brush up on your skills, group sessions on Fridays.

**Cardio Tennis:** heart pumping fitness which burns fat, increases stamina while having a whole lot of fun - no ability required. Classes Mon & Tues 9.30-10.30am. Contact Vanessa 5432 332 or claybrookestate@xtra.co.nz

**Amnesty!** Do you have scarves/woggles/jerseys or other gear from Tamaha Sea Scouts/Cubs that you have meant to return but haven't got a round tuit? Please return them to collection place at the Wharfside counter or ring Lynley 540 2292.

**Garage Sale:** Saturday 16th Oct – 10 Higgs Rd, 9am-1pm. Wide range household items, stainless steel sink bench top, vanity, clothes, books, lawn mower, bags furniture, door + frame, copper cowl and extractor, Morris Minor, TV etc. 540 3581

**Skye Harvest Extra Virgin Olive Oil** 2010 harvest available. 750ml bottle \$20. Ph 540 2698. email slmcleod@xtra.co.nz. Orders delivered, or call in 113 Seaton Valley Rd Mapua.

**Coastal Connections** Social Group. Next luncheon is to be held at the historic Moutere Inn in Upper Moutere, Thursday 14th October. Look forward to seeing you all. Julie Haliday, 540 3533

**Spring Clean-up:** Let me assist you in getting on top of your property maintenance. Lawns, pruning, weed spraying, handiman repairs my speciality. Keith 540 2540

**Fair Exchange:** We meet the second & fourth Wednesdays of the month. 9am at the Smokehouse to exchange homemade or homegrown items. Info: Debbi, 540-2942 or DLBamfield@gmail.com.

**Probus Club** meets first Fridays, Mapua Hall 1.30pm. All retirees most welcome. Enquiries to Pres. Ray Kitto, 03 520 2622, Secr. Margaret Butchart 5402686

**Coastal Garden Group** meet first Thursdays, 1.15pm, Supper Room, Mapua Hall. Members, guests & visitors welcome. Barry Highsted 540 3139.

**PANZ** (pastel artists of NZ) meet each Tuesday, Mapua Hall, 9am-noon. If you are interested in trying pastels as a painting medium, please join us. Glenys Forbes 540-3388.

**Mapua Art Group:** Painting/Drawing mornings Thursdays 9-12.30, Supper Room, Mapua Hall. A group of like-minded artists get together to paint and help each other in a fun and social environment. All levels & media most welcome. \$4

session includes morning tea. Tables and chairs provided. Lisa Chandler, 540 3933.

**RSA Meetings** are held in the RSA room at the Mapua Library at 2.00pm, second Monday of each month and refreshments are served at the close.

**Mapua Hills Rose Society** (est 1949) meets 1st Mondays (except J months) 7.45pm, Supper Room, Mapua Hall. Rose lovers, growers, visitors and guests very welcome. Enquiries: Letty Thawley, 540 2876, Margaret Sinclair 03 528 8477.

**Children's Gymnastics:** 1-9yrs. Designed to improve a child's strength, balance, coordination, spatial awareness & eye tracking using hand apparatus, songs, and gym equipment in a fun, positive learning environment. Thursdays @ the Old Hills Community Church Hall, Mapua. Fridays @ Moutere Hills Community Centre, Upper Moutere. Ring Sam, 5432512

**Friendship Club** meets third Thursdays 2pm, Supper room at the Hall. We have a game of indoor bowls followed by afternoon tea (please bring a plate). \$2 door charge and 20¢ raffle. We are a group of friendly people who enjoy a good laugh (some of us are not good bowlers). We welcome new members. Val Roche 540-3685

**Genealogy Computer Discussion Group:** This year our bimonthly meetings will be 1.30pm on Saturdays on these dates: Oct 9th; Dec 11th. Info: Val 540 3931 or Peter 540 2686.

**Toy Library:** check out our extensive selection of toys, puzzles & videos for children 0-5yrs. Located behind Mapua Hall every 1st & 3rd Tuesday, 10-11.30am & 6.30-7.30pm. Phone Emma 03 929 5123 or Gill 543 2195 about membership or casual hire.

**Women's Recreation Group** - meets outside Mapua Mall Thursday mornings. Leaves 9.15am for 1½ hour walk. Route varies. Join us whenever you can. Some members may cycle. Info Lynley 540 2292.

**Mapua Village Quilters** meet each Wednesday evening. We are a small group, anyone interested to join us, please contact Linda, 540 2840

**Spinners, Knitters, Weavers** – Wool Gatherers meet at Mapua Hall, second Tuesdays, 10am. All welcome.

**Kidz'n'Koffee Playgroup,** Wednesdays (in school term), 10am-noon at Hills Community Church. Ages 0-5yrs. All parents & caregivers are welcome to attend, no cost, donation for morning tea. Come & relax & meet some neighbours. Lisa Gant 543 2530, Tressa Waynan 540 2632.

**Need technical help?** Can't connect your DVD player? Don't know how to download photos from your digital camera? Computer running slowly? Local help is at hand! Average job price only \$20! Basic web design also available - pages start from just \$35. Call Sam, 540 2804. – sambennett@live.jp

**YOGA with Robin** - Classes weekly. All levels welcome. Call 540 2113 for class times & information. www.rubybayyoga.com

This document was created with Win2PDF available at <http://www.win2pdf.com>.  
The unregistered version of Win2PDF is for evaluation or non-commercial use only.  
This page will not be added after purchasing Win2PDF.