

In support of Māpua Boat Ramp

After reading Sonja Mitchell's opinion piece in last month's Coastal News, I wished to present my opinion in the following points. I am a Māpua Boat Club member but not a boat owner, apart from a paddleboard.

I am keen for the new boat ramp in order for Grossi Point to go back to people for picnics, swimming, and hand launched small boats eg kayaks.

I do not understand boating currents and bars but if it is dangerous, surely that is the same for most boating areas in NZ. I have not heard of any accidents at the bar.

My friends who are fishermen tell me they launch at 5am to catch the fish and are often back by 10am and mostly on weekends.

The members of Māpua Boat Ramp Community Trust are all locals who have lived locally for some time - through the remediation process - and understand the cap on Waterfront Park so have specifically designed facilities to sit on top of that cap. Pollution is not an issue.

At a public meeting in 2023 the Trust explained a user-pays controlled access ramp will generate funds to maintain the new facilities and any excess funds will be available for community grants. Somehow this message has been lost

They also explained that apart from \$700K promised by TDC from the Reserves fund, construction funds would be raised by fundraising and grants - not rates money.

The new ramp will be bigger than the old one on the wharf - but isn't Māpua bigger than when the old ramp was in regular use and isn't that progress as the village is

growing? It seems to me that two lanes will be efficient, allowing both launch and retrieval at the same time so less queuing.

The ability to park cars and boat trailers on Kite Park will secure this space from buildings and allow visitor parking to continue - essential over the summer holidays and for the Māpua Easter Fair.

I am a keen wharf jumper but recognise that the wharf has always been boats first. All people using the wharf need to respect others and co-exist together.

We are lucky to have the wharf that was rescued from demolition way before my time by locals and the Māpua Boat Club. Old photos in the museum show the old working wharf was not accessible to pedestrians and therefore wharf jumpers, only boats. Access was only through the working buildings.

I have heard many people saying they like the village atmosphere at the wharf, and they don't want progress. Is not the building of cafés and hospitality sites progress and who gets to pick and choose the progress?

I like the idea of living in a village with lots of amenities even though I don't use them. For example, I don't play tennis but am pleased other people have that opportunity locally.

I think the Resource Consent Hearing will be a great example of democracy - all sides will have their say and an independent commissioner will make a judgement - bring it on!

Katrina Ballantyne, Secretary

End of the road for the Māpua Boat Ramp?

Thanks for putting Sonja Lani's excellent analysis - "Māpua waterfront deserves better" on the front page of the July issue where it deserved to be.

There's an old saying the Māpua Community Boat Ramp Trust should heed: a thicker whip won't make a dead horse go faster. The Trust and the Māpua Boat Club need to recognise that what lies before them now is five miles of bad road.

As Sonja's article pointed out, there are problems with every aspect of the proposal, which is why the Trust has been advised to pause the application.

The process has run into a funding shortfall. The Trust applied for another \$250K for legal and report preparation

costs, and the Council turned them down. Mr Marshall made it clear that the Trust and the Club had no more money to fund it, and they've only got \$600 in their Givealittle page (\$500 of that from Mr Marshall).

If consent was granted (unlikely), an appeal to the Environment Court is guaranteed. If the appeal failed (even more unlikely), then a public consultation process must then follow before a licence to occupy can be contemplated by the Council.

Then there's the prospect of an uphill fundraising effort to find the \$2.3M estimated cost of construction, one third of which has to come from the community.

Continued on page 2

Continued from page 1

It's not likely they'll get that kind of money from the community. The Council chided the Trust for its 'bullish' approach to community consultation. Mr Marshall told the Council that many of the 111 objectors were people from out of town or people who objected for the sake of objecting. Actually, some of those people know a great deal about the environmental, legal, and boating safety risks, which is why the Trust was advised by the Council to pause the application.

The Māpua Boat Club and more recently, the Trust, have been doggedly pursuing this boat ramp since 2019 when they got the Council to permit this application, despite it being contrary to what was explicitly stated in the 2018 Master Plan.

RMA application costs, funded from the Moutere Waimea ward community reserve, so far total \$169,406. A further \$64,908 has been spent of Trustees' own money and a Māpua Boat Club loan. \$234k and nothing to show for it. It's time to take the application off the table to make space for implementing the ideas which have been on hold because the land was earmarked for a ramp.

It's very clear: the waterfront is not a place for a boat ramp or associated buildings. The contamination risk is too high, the safety risks too great. The certainty that at some point a big boat will lose power in that ferocious current means that wharf jumping will have to be prohibited - more signs won't cut it.

It is a place for the whole community to enjoy, just as the community envisaged in the 2018 Master Plan.

A website has now been launched dedicated to stopping the ramp and getting Council to finish the park as it promised. The website's membership will be restricted to people who support these aims.

Various plans have been done over the years for a waterfront park with shade sails, public BBQs, a light playground, outdoor exercise equipment and more seating areas. To progress this vision the Māpua Waterfront Park Action Group has been formed. We've applied for a community grant to assist us with a concept plan in line with the latest version of the 2024 Māpua Plan (minus the ramp), and we'll be taking that plan to Council regardless of what the Trust decides to do.

If you'd like to lend your voice to our cause, go to www.mwpaction.group and sign up. Your membership will count as a statement of support for our mission: stop the ramp and finish the park.

We look forward to welcoming you to the Māpua Waterfront Park Action Group.

Mike Ashby, 021 999 414

Mike Ashby is a resident of Māpua and a keen fisherman.

Cat Sitter Required

in Māpua

Would you like a change of scenery?

I would like to find someone I can call on to take care of my gorgeous cat when I go away from time to time.

Maybe you are in shared accommodation or just need a break somewhere different.

My Abode is cosy small and simple.

Call: Kathy 0211448993



DESIGN BY GEORGE

**Apparel + Branding
at its best**

**EMBROIDERY
LOGOS + DIGITIZING
GARMENTS
PERSONALISED PRODUCTS**



designbygeorge.co.nz

**RICHMOND | MAPUA | MOTUEKA
P 022 500 7500 info@designbygeorge.co.nz**

Thank you and updates about the Māpua Boat Ramp proposal

By Sonja Mitchell, a member of Friends of Māpua Waterfront

Thank you to the many people who have been in contact about last month's article outlining why we don't need a boat ramp, building and carpark on public land near Māpua Wharf. It was heartening to hear that some of you changed your mind about the boat ramp as a result of reading that article, and that others were encouraged to see their views reflected.

The article drew from the public submissions - so my thanks in turn go to all who submitted such thoughtful submissions. Those opposed to the application tended to be detailed, considered and informative; while many in

permanently live in Māpua. In doing so, the Trust forgets that people can connect to a place in a range of ways, and that 70% of the costs of remediating this land were borne by the Government, ie taxpayers, and that a condition of that remediation was that 40% of the remediated land would be kept for public use.

Māpua residents certainly have a strong say in this land – many paid a high price in terms of health for this land, and many fought hard to have the land remediated and returned to the community, including members of my family; and ratepayers continue to pay the 30% of costs.



Walking near proposed boat ramp location.

The proposed 'all tides' boat ramp would extend out far across the foreshore

support were done on pro-forma forms with few to no reasons provided for their support (it appears someone went door-to-door collecting pro-forma submissions).

As someone who doesn't live permanently in Māpua, I felt freer to put my name to that article than some people have said they would have. I'm sorry to hear that some people have felt silenced or unheard in their opposition to the application. There has been pressure on the community, misinformation surrounding the Māpua Community Boat Ramp Trust's application, not to mention flawed 'surveys'.

At least one submitter described the Trust's supporters' approach as 'aggressive', and many others described it as 'misleading'. Some members of the Māpua Boat Club have expressed that they don't feel that their views against the boat ramp have been listened to or respected.

We as a community and wider NZ public need to be able to talk freely and without fear of intimidation about the application by the Māpua Boat Ramp Community Trust to effectively build privatised assets on public land. We need access to accurate, clear information.

The Trust has also attempted to dismiss voices from 'outsiders'. This includes people like me who have family in, and strong connections to Māpua but do not

The wider public have a say too.

The Trust can keep claiming that it has community support, but the community, in the submissions process and since - including in the 30% of written submissions and 70% of verbal submissions that oppose the application - has clearly demonstrated otherwise. The Trust can keep claiming that the vast risks - including risks of recontamination, environmental damage, health and safety risks, cultural risks, increased traffic and noise, and loss of public amenity values and natural character - can be 'managed', but the facts, local knowledge, and common sense tell us they can't. The Trust appears to be all care and no responsibility. It can keep claiming that it has the financial backing to complete its estimated \$2.9 million project, yet so far it is mostly council's money - a whopping \$390k out of total allocated of \$700k that would usually be spent on reserves - that the Trust has been spending. The Trust can keep claiming that this development is for 'the community' and the sea scouts: but it is clear that the proposed development is effectively privatisation for the benefit of the few (power boaties mostly from outside Māpua and the Trust) at the expense of the many. The Trust can keep claiming this is a 'replacement' ramp but a ramp on this scale and in this

Continued on page 4

Continued from page 3

location is not like for like: it is effectively a regional, commercial boat ramp, not a 'community ramp', and it is proposed for an unsuitable, still-contaminated site.

The Trust can keep putting up signs declaring 'New Boat Ramp to be built by Dec 2024' and now 'New Boat Ramp to be built by Dec 2025', but signs don't make it a reality.

Thanks again to everyone for your submissions.

I wish too, to make one correction to my article. It said the ramp was 14 metres long by 11 metres wide - it should have been 48 metres long by 11 metres wide - my apologies for that, the Trust's application unfortunately lacks good, readable maps.

Some of you will have seen that Trust recently applied to have the council release a further \$250,000 (additional to the \$169,000 already released from a total allocated amount of \$700k) from the Reserves Financial Contributions towards their resource consent application. The council declined the Trust's request and instead agreed on 20 June that \$150,000 of RFC money would go towards meeting *council's* resource consent costs. The statement that Friends of Māpua Waterfront made about that council decision is copied below for information.

Friends of Māpua Waterfront appreciate that the \$150,000 that the Council has released will be used to fund the Council's costs that the Trust has to pay as applicant rather than directly towards the Trust's costs. However, our view remains that the original \$700,000 should not have been allocated to the Trust in the first place and of this neither the earlier \$169,000 nor the latest \$150,000 should be made available. The money comes from the Reserve Financial Contributions account which council policy states is to be spent on capital development associated with Parks and Reserves activity. Māpua Waterfront Park is public open space given to the people of New Zealand after the contaminated site was remediated and capped. The proposal for the very large boat ramp, building and car parks, privately owned, will not benefit this open space but restrict its use by privatising much of it for the benefit of a select group over many other users. If reserves money is to be used there it could be spent on the items originally planned to benefit all: a children's play area, shade sails, interpretive panels on Iwi history and the story of the FCC clean up and so on.

The funding already released to the Trust has no security and if a resource consent isn't granted, that money intended for reserves will be lost. Funding the Trust for the resource consent hearing out of a fund intended for the community as a whole creates a huge disparity in terms of the resourcing provided to the Boat Ramp Trust and the resourcing provided to other groups and people in the community who seek to have their opposing view heard at the hearing. It was heartening to hear councillors acknowledging the level of opposition in the community to the application, and the complexity of the application itself, with a large building included at a very late stage, catching many by surprise.

We believe the many safety and environmental issues associated with this ambitious proposal make it a real threat to the future of the Māpua waterfront, the Waimea

Inlet and our community as a whole and we have tried to convey this to councillors.

For those in the Māpua community or wider public who oppose a boat ramp, building, and carpark being built on public land near Māpua wharf, I encourage you to let all Tasman councillors know (except Councillor Kininmonth, who has a conflict of interest). Similarly, if you would rather see money from the council's Reserves Financial Contributions spent on actual reserves, such as improvements to Grossi Point, or on improvements to Māpua Waterfront Park such as shade cloths, a playground, and greater recognition of the relationship of Māori with this area, please let councillors know. We could certainly do a lot with what remains of the \$700k of RFC money the council has allocated to the Trust! Consultation is taking place on the navigation safety bylaw – if you have safety concerns regarding proposed boat ramp and increased power boat and jet ski traffic near the wharf and in Waimea Inlet, I encourage you to let the harbourmaster know (peter.renshaw@tasman.govt.nz).

I also encourage people to speak up in whatever groups you are involved in. Whether it be the Māpua Community District Association, iwi, hapū, whānau, families, the Māpua Hall association, the community library, walking groups, cycling groups, sailing groups, groups of kayakers and boaties, waka ama groups, art and crafts groups, choirs, music clubs, dance clubs, social clubs, garden clubs, religious groups, swimming groups, sports groups, parents' clubs, kids' clubs, school groups, rainbow groups, coffee groups, book clubs, social media groups, the Māpua Boat Club, fire-fighters, the RSA, the Sea Scouts, business groups, environmental groups, Friends of Waimea Inlet, and Forest and Bird, and so on. The Trust appears to have dominated the narrative around its own resource consent application, and the council has to date helped fund it to do so. The Trust also appears to have dominated the narrative about who is and isn't 'community' for the purposes of their proposed ramp, building and carpark on public land. It is time for the full community and wider public to take our power and our voices back.

Thanks again for your generous messages, thoughtful submissions, and your willingness to speak up and take action to protect our special public spaces.

If anyone wishes to give constructive feedback about this or last month's article or is interested in joining or supporting Friends of Māpua Waterfront, please feel free to email me on sonjalani@outlook.com.



Acupuncture

Tibetan medicine & acupuncture

Stephanie Wright

Practitioner of Tibetan Medicine

Tibetan Acupuncture & Massage

Facial Enhance Cosmetic Acupuncture

Ph. 021 169 0218

swchiro@gmail.com stephaniewright.co.nz

Māpua Boat Ramp

Having read Sonja's article in the last Coastal News, I feel the least I can do is respond. Her article which summarised some of the submissions about proposed developments at the Waterfront Park, was exactly something a person like me needed to read.

What type of person is that?

I, like many others, get too busy at being busy and it results in things like making submissions fall into the 'too hard basket'. I commend all individuals who took the time and effort to submit their views. It is all too easy for individual voices to remain unheard when clubs, organisations, Trusts etc spend much time and money on generating material for submissions.

It is only when a broad range of opinions are aired can we all get a feel for what views really exist, as opposed to what views find a way to be more vociferous.

Thank you, Sonja, for outlining and clearly bringing to my attention the many points raised through the various submissions. I was never going to read the submissions for myself, and I am sure I am not alone in that regard.

It is the best article I have read, regarding the issues of a new boat ramp (plus all the extras that are included in the plans for the waterfront). I think it has been very revealing to know what some of the submissions included. I found it very interesting, for example, that the Sea Scouts lodged a neutral submission.

I feel that over the last few years, I have been exposed to what the boat ramp Trust thinks and now I feel that I have a more balanced view.

My hope would be that this is a process where the whole community moves forward. What would a win - win outcome look like? If we can't think about a win-win scenario, rather than a for-and-against approach, then I believe the whole community 'loses'.

What would your win - win outcome be? If you can't think of any, here are some possibilities:

- A small boat ramp, replacing like with like, in a location that local boaties like to use?
- A suitable building in a suitable location to help the Sea Scouts with their needs?
- The green public spaces that are valued for various reasons, continue to be there for everyone to enjoy?

Whatever evolves, it is clear that the existing proposal has never considered a win-win outcome, so perhaps now is the time not for a mega development, but a mega shift in mindsets?

Sincere thanks to everyone who, unlike me, did take the time to submit their well-considered views and to Sonja who has made them accessible to readers of the Coastal News.

Nicky McBride



KINA BEACH BEAUTY
Suzie Brosnahan
Beauty Therapist {ITEC; CIDESCO}

Now operating from MAPUA

Still offering a range of essential beauty treatments, together with relaxation therapy. Why not treat yourself to my signature Waterlily Spa Facial, rejuvenating both mind and body.

Visit my website to book your next treatment. Gift vouchers available.

<https://www.sayyesenterprises.co.nz/kinabeachbeauty>
Ph: 027 3788277




ANTIDOTE APPLIANCE REPAIRS

Laser Electrical Motueka and Antidote Appliance Repairs
Proud to be 100% Locally Owned and Operated

- Air Conditioning and Heat Pump Installation, Cleaning and Servicing
- Domestic & Commercial Wiring
- Appliance Repairs
- New Builds or Renovations
- 24 hr Callout Service

Contact Greg and Donna Bradley
- 03 528 9071
- 027 243 2212
- 9a Monahan Street, Motueka
- motueka@laserelectrical.co.nz
- laserelectricalmotueka.co.nz

Coast & Country Chiropractic Centre
Dr. Ron Howard
ACC registered
coastandcountrychiropractic.co.nz

Mapua 105a Aranui Rd 03 540 2068
Motueka 2 Wilkinson St 03 528 8880



MOUTERE CARAVANS
Your one stop place for all your caravan needs!



Corinne Frank Lukas Matt

SHOP & WORKSHOP: OPEN
TUESDAY to SATURDAY, 9am to 5pm

219 Old Coach Road, Mahana, Upper Moutere
Phone: 03 5432668
info@mouterecaravans.co.nz
www.mouterecaravans.co.nz

Māpua Maritime Museum hosts photographic exhibition

Images of the Tasman District's spectacular scenery, boats, wildlife and people will be on display at the Māpua Maritime Museum until Thursday August 8.



The photos are those entered in the 2024 Māpua Boat Club Tasman District Amateur Photographic Competition and as well as an official judging of entries, the public has the chance to vote for their favourite in the 'People's Choic' section.

Entries closed on July 22 and the competition was open to photographers of all ages from anywhere, but the photos they entered had to be taken in the Tasman District.

There's a special section for children under 15 with the same categories as the open competition - Nature, Boats and People.

As it is the Māpua Boat Club's contest – all entries in each category have a maritime theme – photos taken on or near the ocean or relating to boating.

There are generous prizes for each category, thanks to CopyArt Richmond, once again the competition's major sponsor, and other Māpua sponsors.

Prizegiving will be at 4pm, Sunday August 11 at the Māpua Boat Club on the Māpua Wharf.

A selection of the images will be used to produce a calendar sold as a fund raiser to support the Māpua Maritime Museum.

GENTLE CHIROPRACTIC
Sports & Spinal Injury Clinic
Acupuncture
Functional Feet
03 540 3999
gentle-chiropractic.co.nz

Māpua Spring plant sale save the date

Saturday September 21st, 2024, 9.30am - 2pm

The Māpua Spring plant sale will be held at the Old Church Hall, 121 Aranui Road. There will be seedlings and plants at low prices, along with great raffle prizes and a sausage sizzle on the day.

We welcome any donations of plants, so if you or your friends/neighbours have any seedlings cuttings, and/or bulbs that can be potted up, please do so to support the event.

For further information, contact

Jan Patterson 027 701 1032 jan.pattersonnz@gmail.com
All proceeds go to the proposed Māpua Community Hub

Recruitment can be a hard grind
Employer? · Employee? · Contractor? · Manager? · Board member? · HR?
We help you with recruitment and provide info on costs up front
Call for a confidential, free consultation **0274 296 344**



What's on at Hills Community Church?

Sunday

Morning Service - followed by Morning Tea - 9:30am
First and Third Sunday – Family Praise and Worship
Second and Fourth Sunday – Family Communion.

Great family friendly crèche facilities and outdoor space.

Youth Group – 6:00pm to 8:00pm

Food, fun, fellowship, friendship.

Wednesday

Senior Moments – second and last Wednesdays each month. 10:00am to 12:00pm

Friendship, food, events and information.

KidsnKoffee – Community Playgroup – 10am to noon.

A great space for all the whanau.

Thursday

Prayer and coffee – 10:00am

An opportunity for prayer, discussion and a chat.

Friday

Craft and Coffee – first and third Fridays, 10am to noon.

If you love all things crafty then come along and join the group.

Throughout the week

Life Groups: Drop in for coffee, chat or just quiet space.

For more information contact Hills Community Church:

Phone: 03 540 3848,

email: office.hcc@xtra.co.nz

www.hillscommunitychurch.org

Māpua Village Bakery

Staff Update



This smiling face is Latisha. She is our front of house manager who joined us in April. She has worked in hospitality all over the Tasman region for many years.

Work and family are very important to her, especially given that she has twin 12-year-old boys.

And when she's not at the bakery she can be found in the bush, fishing out on the water, hiking up local mountains, or even at the local pub playing pool or chucking darts. She also enjoys spending time socializing with her friends.

When it comes to her interests you can always talk to her about fashion. And the most interesting (tasty) thing she has found at the bakery so far is the lemon meringue pie.

If you do have a chat you're welcome to call her by her many nicknames including Lala, LeiLei, Teesh, La, and Latasha.

Mini-Slices



Sometimes you pop in for a coffee and would like something to nibble on while you're at the bakery (or driving off to work). But a whole slice is just a bit too much yummy sweetness at the moment.

Well don't worry we've got you covered.

The bakery now has mini-slices of our popular slices (chocolate fudge, lemon & ginger, espresso & walnut, and Florentine) available at the counters.

Sandwich Madness

The British celebrate national sandwich week in May and the Americans have national sandwich day on Nov. 3rd. So we've decided we need a Māpua sandwich month and we've chosen August.

That means that this August we'll be reviewing all our current sandwiches and coming up with ideas for new ones. We are thinking of some smaller ones, fancier ones, beefier ones.... with crustier bread, sweeter bread, softer bread.... you name it we're thinking about it.

If you have a chance please let us know a favourite sandwich you'd like to see the bakery provide, and if losing any of our current ones would break your heart.

Now I'm off to dream about a chicken, cranberry and brie mini-baguette sandwich. Yum!



Pet of the Month



This lovely girl is Tui. She's a Collie/Labrador cross who will be 7 years old in November.

She was born in Christchurch (but likes Tasman better, she told me).

Tui loves the beach and chasing rabbits in her backyard although she hasn't caught one yet. [Ed - Don't give up Tui, I believe in you].

Her favourite toy is a squeaky chicken, but she's always happy to chase a stick or ball.

She loves coming to the bakery after she walks her humans. However, she refuses to drink any water until she gets her biscuit. Then she's happy to sit quietly in the sun until it's time to go home.



MĀPUA HALL NEWS

72a Aranui Road Māpua | Mapuabookings@gmail.com | 035402330

Monday	Tuesday	Wednesday	Thursday	Friday
9.30-10.30 Musical Theatre 10.30-11.15 Open Dance DELIAS DANCE DIVAS	9.00-12pm PANZ PASTELS ARTISTS OF NZ	Yoga tone-7.15am-8am Yoga restore 8.05am-8.50am YOGA TONE AND RESTORE WITH AEVEN		9.00am-11.00am STRENGTH/CARDIO WITH LYNDA
Starts 5th Aug 11.30-1.30pm 4 WEEK BEGINNER WEIGHT CLASS WITH LYNDA	9.00-12pm SIoux LINE DANCING	9.15am-10.45am YOGA FOR HEALTHY LIVING WITH NIKKI	9.30am-12.30pm MAG MAPUA ART GROUP	9.15am-10.45am YOGA WITH MARTIN
	10.00-1.00pm CREATIVE FIBRE 2ND TUESDAY OF EVERY MONTH	9.00am-10.00am AEROBICS WITH LYNDA		10.00am-11am PILATES WITH LYNDA
		10.00am-11am PILATES WITH LYNDA		
5.30pm-7pm BROGA WITH NIKKI	6.00pm-7.00pm STRENGTH/CARDIO WITH LYNDA	11.30-12.30pm MINDFUL MOVEMENT WITH TILLY		
5.30pm-7pm MAPUA HALL SOCIETY MEETING 3RD MONDAYS	6.00pm-7.00pm YOGA WITH MARTIN	1.30pm-2.30pm CHAIR YOGA WITH YVONNE		
7.15pm MDCA PUBLIC MEETINGS MEETING 2ND MONDAYS		6.00pm-7.00pm MAPUA FOOTBALL	7.30-9.00pm MAPUA COMMUNITY CHOIR	

Upcoming Events

- **Makers Market**
18th August 10-3pm
- **PechaKucha 2024**
20th September



From \$20 per person

Benefits include

- Hall Society E Newsletter
- Regular Activities info
- Event news
- Pre Sales to events such as **Pecha Kucha**
- Vote on matters at AGM
- Financial support for you hall

Thank You

Hall Society News August 24

We are thrilled to announce we have new **Professional Video Conferencing equipment** available for use in our Bill Marris Hall.

For bookings please contact us on mapuabookings@gmail.com

Our popular Mapua Hall- **Makers Market** is on the **18th of August from 10-3pm.**

If you would like a stall or come along and see the wide range of talent, we'd love to see you.

To book a stall contact mapuamakersmarket@gmail.com

Calling all volunteers that can help in our upcoming **PechaKucha evening on the 20th September** if you would like to help us on this wonderful occasion please contact Kristin on info@kristin-harrison.co.nz

Hugh Gordon remembered

Elena's memories

I first met Hugh at MDCA meetings in 1999. He was a snappy dresser with that red beret and was a snappy communicator too, with his "now you listen here!"

I have many special memories of Hugh:

His passionate commitment to "the bypass" continuing and being completed, with suggestions by others that it be named "the Gay Gordon's Highway".

Hugh's love for "Shona dear" (who sometimes accompanied him to MDCA meetings) and their composite family.

Tim Hawthorne's friendship and support for Hugh; visits, outings, rides.

His speedy traversing of Māpua footpaths in his mobility scooter on daily excursions with dog on board – so many stops along the way to chat.

His vigorous engagement in debates on most topics – not easy to find compromises!

Moving to the retirement village – both joyful and challenging times for him and all who cared for and about him.

And now he has left that frail body to fly free with his indomitable spirit and encompassing smile. Thank you for caring so much about our community Hugh – I will miss and always remember you with love and gratitude.

Tim Hawthorne's memories

I spent countless hours with Hugh over the past two decades, many of them in deep political debate - New Zealand and American focused; many hours in philosophical debate, always delivering solutions, which we often disagreed on vehemently. But that was the joy of being with Hugh: he was bright, alive, interested, opinionated and physically and community active deep into his nineties.

He had a long, varied and colourful life, from California to New Zealand. A graduate of one of the US's leading universities, UC Berkley, he often related tales of his life as son of a prominent Los Angeles attorney, to becoming an orange orchardist in California's hot valleys.

Raised in Pasadena, a Los Angeles suburb, Hugh told me he loved selling newspapers on the street during the



depression, was the smallest member of his gridiron high school team and got particular joy out of driving his jalopy loudly through his upscale neighbourhood.

Hugh's was an accidental emigration to New Zealand. He intended to move to Australia where his brother lived, but the OZ consulate in San Francisco directed him instead to the NZ consulate next door.

He forged a wonderful second chapter to his life when he met his NZ partner Shona Moon, whom he loved dearly.

His eclectic experiences in NZ included his work as a dolomite salesman, working at a Nelson nutrition store, traveling NZ with Shona selling school textbooks out of the back of a van, and success in real estate.

Hugh was a lovely man, a husband, a father, a grandfather, a friend to many. He will be deeply missed.

Beginner's Weight-Training
Block Course
A 4-week block course for newcomers to Weight-Training.
Resistance training is great for everything
– especially as we age – & it's *never, ever* too late to start.
Learn the basics about equipment, set-up, correct technique &
body mechanics, & how to choose the right weight,
in a non-scary situation.
Gain the confidence to join a regular class.
All welcome – no barriers re age or fitness level.
4 Mondays in August – 5th, 12th, 19th and 26th
Mapua Hall, 11.30am – 12.15pm.
\$40.00 for 4 sessions.
Ph or text Lynda 0272221491,
or email lyndamabin@gmail.com to book.


Certified Coach
Nutrition Health and Wellness
Cert. Cancer Coach
Menopause Wellness
Appointments available: Virtual or Face to Face
Jump over onto my website to find out more!
Txt: 0274227155
tess@twhealthcoach.co.nz
www.twhealthcoach.co.nz
Prof. Member Health Coaches Aust & NZ Assoc

STREETS FOR PEOPLE

ARANUI ROAD STREET CHANGES

This vision statement was created with the Māpua working group, which included members of the community and various stakeholders: "Creating a safe sustainable road corridor, where attractive and inviting streets encourage an engaged vibrant community life inclusive of everyone."

Using an adaptive urbanism approach, this project employed quick, low-cost interventions such as pilots and pop-ups to inform permanent changes while aligning with strategic plans. Having reviewed the feedback for the Aranui Road project, we have some findings to share.

Vehicle speeds are safer



School end

Ave speeds reduced from 39.8 to 28.6km/h



Town Centre

Ave speeds reduced from 39.8 to 33.6km/h



Wharf end

Ave speeds reduced from 40.4 to 38.3km/h

Perceptions of Safety have improved

In general, how safe do you feel the speed is in the project area, for those not in vehicles?

+11%

'Safe' and 'Very safe'
From 44% to 55%

-17%

'Unsafe' and 'Very unsafe'
From 35% to 18%

How safe do you feel this area is for school children and teens to walk, scoot, skate or cycle?

+6%

'Safe' and 'Very safe'
From 38% to 44%

-9%

'Unsafe' and 'Very unsafe'
From 45% to 36%

How safe do you now feel this area is for the elderly or those with limited mobility to get around?

+5%

'Safe' and 'Very safe'
From 30% to 35%

-3%

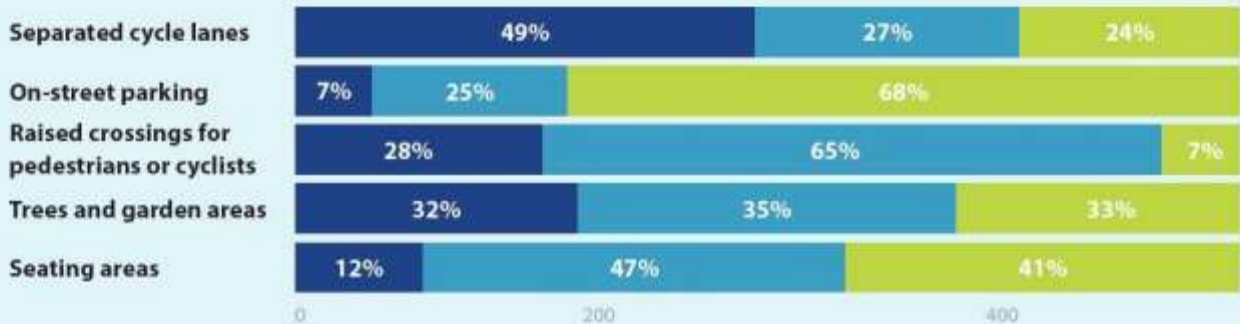
'Unsafe' and 'Very unsafe'
From 45% to 42%

Feedback on features

Māpua 'Shape Tasman' Survey n=583

■ Fewer ■ About the same ■ More

What sorts of features do you think Aranui Road should have in the future, compared with the trial layout?



Finding of interest

Pre change: Prior to the new layout, most cyclists already preferred riding on the footpath (56%) than on the road (44%). The new layout has not caused an increase in the number of cyclist riding on the footpath.



Changes to be made to the pilot for the mid-term

Opposition to planter boxes

Remove and replace with yellow no-stopping lines to maintain good visibility at driveways & pedestrian crossings

Confusion about the new layout

"Shared path" to be reconfigured as a footpath for pedestrians and a one-way cycle lane wharf-bound.

Opposition to material/bollards/ fitout

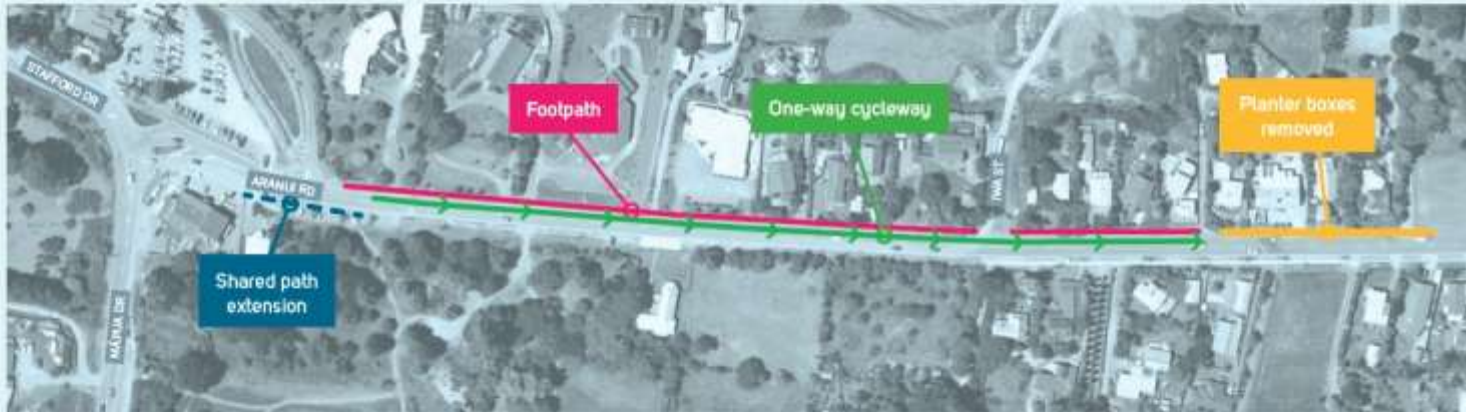
White plaster posts removed to decrease clutter. Concrete separators remain though

Concern about carpark removal

No change. Community feedback desires more on-street parking, yet low pre-project carparking occupancy suggests actual need is lower than perceived.

New path beside Aranui Park should be extended to Fruit and Veg Shop.

This was a theme from the Mapua Master Plan process that we will address as part of the tweaks to the layout. Park seating may also be provided.



Other changes being considered beyond the project

A formal review of the speed limit along Aranui Rd is underway as part of the separate Tasman-wide Speed Management Programme currently underway.



Everyone is a transport expert, right?

I was lucky in my career. I was a wastewater and stormwater engineer. The amount of 'supporting' comments from the public was minimal. We water experts 'knew what we were doing'. It really was 'out of sight out of mind', unfortunately always accompanied by a lack of funding. Unless things go terribly wrong like overflows, breaking pipes and flooding. Many people forget about these incidents quickly.

I always felt sorry for my transport colleagues overseas, elsewhere in New Zealand and especially in Tasman. It is (not?) surprising how many people like to tell transport experts that they have it all wrong.

Well, here is my contribution to this habit to know better by providing two examples:

I was recently visiting family and friends in the Netherlands. I experienced the way transport is managed over there. In this example, they managed to squeeze a two-lane street plus footpaths and cycleways on both sides of a road that is two meters narrower than our Aranui Road (I measured it). This example is shown in the picture above and is a reasonably busy road in the city of Vlissingen. The use of raised concrete kerbs to separate the cars from the cyclists is seen in many places.



It is also very common in The Netherlands that a 30 km/h speed limit is in place on most inner towns and local roads. I didn't hear anyone complain about that and travelling through these areas felt very safe and peaceful.

My second example is an interview I heard on Radio New Zealand. (Science section on Nine to Noon, 17 July – 11:45 am). Part of this interview was about research that was undertaken looking at the effects of lowering

the speed limit to 30 km/h in 40 different European cities. The main reason for these lower speed limits is generally safety. The study showed that the number of road crashes reduced by

23%, road injuries by 38% and road fatalities by 37%.

There were also other benefits such as less pollution, less noise, and increased walking and cycling because people felt safer. Travel times did increase by a whopping 3% to 5%. So, a travel through downtown Māpua from the vegie store to the wharf that normally takes say 5 minutes would take up to 15 sec more!

It is hard to compare these benefits to the costs of providing for such road layouts, but to me totally worth it.

So, I just wonder when New Zealand will be entering the 21st century.

'Transport expert' Jan Heijs, Māpua



Pre-loved
Jacqui's
And More

Quality pre-loved
womans clothing.
Top lables
including
Augustine, Trelise
Cooper, Jane
Daniels, WORLD
to name a few...

Sustainable shopping in a beautiful setting

5 Iwa Street, Mapua (next to the fire station on the wharf). P. 027 346 4071

f @

Grants open

The Peter Malone Community Grants Scheme is now open for applications.

Applications are now open for grant applications from individuals or organisations whose members are predominantly electricity consumers in the Network Tasman district.

Online applications can be completed at www.networktasmantrustgrants.org.nz or you can download and complete a hardcopy application form and post to P.O. Box 3164, Richmond 7050.

Details of eligibility criteria are available online.

Applications must be received by **Friday 23 August 2024, 5.00 pm.**



Lynda's Exercise Classes in the Mapua Hall

Spring 2024 Classes restart August 6th

A short-ish term until the October holidays.

Cardio/Weights Tuesday 6 pm,

Old-fashioned Aerobics Wednesday 9.05 am.

Cardio/Weights Friday 9.05 am.

Pilates Wednesday & Friday 10.05 am.

PLUS – new Beginner's Weight-lifting class Mondays

12.30pm in the Hall, 4 Mondays in August.

These will be advertised at the start of the week.

5-trip ticket \$50; 10-trip ticket \$80; 20-trip ticket \$150;

30-trip ticket \$210. Casuals – yes, \$12 per session.

Top-ups for single sessions on your ticket \$10.

Please contact Lynda for details,

lyndamabin@gmail.com 027 222 1491.

Tasman National Art Awards



Tasman National art awards are held annually and host artists from around NZ.

We are thrilled to have another awards exhibition that is of the highest calibre and showcasing 2D artworks from a variety of styles and subjects.

The prize pool is over \$15,000 and is made up of product, cash and vouchers from a range of generous sponsors.

Every year there is a vast diversity of subjects and styles. There is something for everyone to enjoy. All art works are for sale and each year we have a huge number of pieces sold to grace the walls of homes and businesses.

Come along and experience this year's exhibition!

**Tasman National Art Awards
Māpua Community Hall**

Dates:

Opening night/awards announced:

Saturday 28th Sept, 7pm doors open, 7.30pm start.

Exhibition open:

Sunday 29th September – Saturday 12th October

Daily 9.30-am- 4.30pm

All welcome

All artworks are for sale (eftpos available)

Free entry and catalogue (donation appreciated)

Anna Pickersgill-Brown, Chair

Tasman National Art Awards

www.tasmannationalartawards.nz

Email: tasmanartawards@gmail.com

Instagram: @tasmannationalartawards

Facebook: [tasmannationalartawards](https://www.facebook.com/tasmannationalartawards)



2023 people's choice award - by Jennifer Stebbings



Get your push bike serviced locally by a qualified local bike mechanic.

Pickup and delivery service available from your home (Mapua/Ruby Bay/Tasman/Moutere)

Call or text Gary 0275366470

Domestic Cleaning

Deep cleaning, Regular cleaning, Other.

Ingris Gomez

ingris332003@hotmail.com

021 0277 7752

Māpua Health Centre news

We are very pleased to have Dr Martinique van Ryn joining us as our GP Registrar in August for six months and she will be working 2.5 days a week. We also warmly welcome Tani, our new healthcare assistant, who will be working alongside the clinical team.

A quick reminder that we can provide Travel consultations. We have trained staff to help you sort out and provide appropriate vaccinations and other requirements that may be needed for overseas travel. Please contact our reception for details, 03-5402211.

We are pleased to now offer a full skin check service with an experienced female clinician. The cost is \$130 for a 40-minute assessment. Funding may be available for any treatment required.

There will be a small rise in some patient medical and nursing fees in line with the PHO agreed increases.

Join the Portal – ManageMyHealth is our patient portal which now offers you access to your consultation notes which is a great way to refresh your memory about any instructions or advice that you have been given by your GP. It also gives the ability to order prescription renewals, make your own appointment, check your lab results and send messages. Simply bring your Drivers Licence to MHC and Reception can sign you up.

It is daffodil day this month in support of the Cancer Society. Every day 74 New Zealanders hear the words, "You have cancer" and their life changes forever. We all know someone affected by cancer and the toll this takes on them and their friends and whānau.

But there is hope. The Cancer Society helps to fund cancer prevention policy and life-saving cancer research and provides support and hope to cancer patients and their whānau from diagnosis through to post-treatment.

There are also things that we can do in terms of lifestyle and diet factors to try to decrease the likelihood

of getting cancer. A review of studies and meta-analyses found "convincing evidence" of a lowering of colon cancer risk with less alcohol and red meat and eating diets high in dietary fibre, including adherence to a Mediterranean diet, a pesco-vegetarian or semi vegetarian diet. (*JAMA* February 16, 2021).

An earlier study found that highly processed foods may raise overall cancer risk and that even a 10% increase in the proportion of ultra processed foods, such as such as dehydrated soups, processed meats, biscuits, and sauces, in the diet was associated with an 11% increase in overall cancer risk.

Conversely, a diet consisting mostly of fresh or minimally processed foods, including fruits, vegetables, pulses, rice, pasta, eggs, meat, fish, and milk, was associated with a reduced risk for overall cancer and breast cancer (*BMJ*. February 14, 2018).

We know that sugar is not good for us, but even some artificial sweeteners can lead to cancer, especially aspartame which causes a 22% increased risk (*PLoS Med*. 2022 Mar 24).

There are a number of important events for the month, including:

- 1-7 World Breastfeeding Week
<https://worldbreastfeedingweek.org>
- 9 International Day of Indigenous People www.un.org
- 12 International Youth Day
www.un.org/en/events/youthday
- 12-18 Women's Health Week
www.womenshealthweek
- 14-20 Conservation Week
www.doc.govt.nz/news/events/conservation-week
- 25 Daffodil Day – Cancer society NZ
www.cancersociety.org.nz



Tuffnell
Plumbing Drainage & Gas

Servicing Mapua, Ruby Bay & Moutere Hills areas daily

Plumbing – Gasfitting – Draining Wastewater Servicing

Contact us to book your job or free quote today

03 543 8090 or 0800 129 683

info@tuffnell.co.nz

"We thank all our clients for their continued support"



Master Plumbers
Representing Excellence



MOWTIVATED
Lawn & Garden LTD

For all your garden needs:

- ✿ Weeding & Mulching
- ✿ Pruning & Hedge Trimming
- ✿ Push & Ride-on Mowing
- ✿ Brush Cutting
- ✿ Green Waste Removal
- ✿ Lifestyle Blocks

Something you want done not listed above?
Give us call!

Michael and Anita are a husband and wife team with a passion for providing excellent quality garden services. We are not afraid of taming wild gardens.



027 599 3304

No job too small, just give us a call. Free quotes!

Ruby Coast Initiative Trust – job done!

On 4 July the Trust held a small celebration at the site of the Seaton Valley Sculpture to formally bless and gift this sculpture to the TDC. The celebration also highlighted the completion of the Ruby Coast Gateway Sculpture Project.

Having installed the Seaton Valley Sculpture, the final sculpture in a planned series of three, the brief of the Trust, visualised more than 13 years ago, has been realised. For current Trustees, Chairperson Neil Bruce-Miller, Treasurer Tim Kelly, Secretary Janet Taylor and Trustee Jan Crooks this celebration also marked the winding down of the Trust, satisfied that the Trust's work is now complete.

It was a perfect Tasman winter day, clear blue skies and a view of the Mount Arthur range as backdrop. Kaumātua Harvey Ruru and Mike Elkington, along with Mayor Tim King and Neil Bruce-Miller all spoke at the celebration. Trustees were joined by grant sponsors, donors, previous trustees, representatives from various community groups and associations, the artist and supporters who donated expert skills to the project.

RCIT was formally established in 2013 after local groups – Māpua and Districts Business Association (MDBA), Māpua and Districts Community Association (MDCA), and Tasman Area Community Association (TACA) came together concerned about the potential impact of the Ruby Bay By-pass.

The Gateways Sculpture Project has been community driven - designing, creating, fund raising and installing three sculptures at the road access points into the communities of Māpua, Ruby Bay, Tasman and Kina. Local

artists worked together to develop the concept design for gateway sculptures to mark the key entry points from the By-pass into the area that would be 'cut-off'. This area – from estuary to estuary, has been collectively referred to as The Ruby Coast.

RCIT has been involved in several projects to help foster a sense of community and attract visitors to this area with the sculpture project being the largest and taking the longest! The Āporo sculpture was installed in Tasman Village in 2015, the Māpua sculpture in 2018 and finally the Seaton Valley sculpture in 2023.

The Āporo sculpture reflects the bird life of our local estuaries and the Māpua sculpture the fish and aquatic life of the estuaries. Both these sculptures are of the same size, scale and shape. Consent conditions meant the sculpture for the Seaton Valley site is smaller in scale, hence the different style of this 'linking' sculpture, designed by Russel Papworth from

Forest Fusion, it brings together the two larger sculptures by depicting both the aquatic and bird life of the area.

The Trustees are extremely grateful to all who have supported the Trust's work over the years and having now gifted the three sculptures to the TDC hope these will be enjoyed by all for many years to come.

RCIT Trustees: Jan Crooks, Janet Taylor, Neil Bruce-Miller and Tim Kelly



- Spot Checks
- Mole Mapping
- Skin Cancer Surgery
- Treatment of other Skin Conditions

 **KIWISKIN**
Māpua Skin Clinic

Telephone: 03 540 2373

Email: mapua@kiwiskin.org.nz

Website: www.kiwiskin.org.nz

Address: Unit 9, The Village Māpua
66 - 68 Aranui Road, Māpua 7005

RUBY BAY STORE What's on in August

Saturday 3 August, 7pm
THE NELSON COUNTY PLAYBOYS
 Popular local band featuring Clayton (The Early Bobs) Taylor with Nathan Torvik and John Ray cover Steve Earle and other American icons \$25

Wednesday 7 August, 7pm
DONNA DEANS: Butterflies and Bees Tour
 With John Dodd and John Egenes. Singer-songwriter Donna D has played with Willie Nelson, Kasey Chambers, Jimmy Webb, Paul Kelly and Don McLean \$25

Saturday 17 August, 7pm
PETE FLYNN COLLABORATION
 Pete Flynn used to perform his contemporary folk songs solo but is now joined by a trio from Golden Bay \$25

Saturday 24 August, 7pm
THE EARLY BOBS
 Our audiences love how Clayton Taylor emulates Dylan. Along with Geert Hermsen on harmonica and Nathan Torvik on mandolin and guitar \$25

Friday 30 August, 7pm
HANNAH EVERINGHAM ON TOUR
 This well-travelled singer-songwriter is a must-hear, especially for fans of T Waits, P Smith, A Harding and C Barnett \$25

For bookings, more info and new events visit

www.rubybaystore.co.nz

174 Stafford Drive, Ruby Bay - 027 417 1713

Store opens one hour before each show

Local food, wine, beer and cider

Zoom Hair & Beauty

Book Online at: www.zoomhair.co.nz

03 540 2333



71 Aranui Road, Mapua

Mapua Landscapes LIMITED
 03 540 3423

Landscape Supplies
 Courtesy Trailers
 Gardening products
 Wine Barrels
 Railway Sleepers
 Bridge Beams • Trellis

Digger and Truck available for Retaining Walls, Driveways,
 Shaping up sections ready for landscaping, house sites

15 Warren Place, Mapua www.mapualandscapes.co.nz

Book Review

**The Axeman's Carnival by Catherine Chidgey Te Herenga
 Waka University Press – 2022**

I don't much like fantasy, especially fantasy with talking animals. So why is it that my two most recent favourite books feature talking birds? And not just ordinary talking birds, but clever, witty and (mostly articulate) birds?.....Go figure.

Still Life by Sarah Winman features a clever parrot commentator as one of its characters – it's in the library and also available and marvellously read on (BorrowBox via your TDC library membership) audio book by its author. But that was last year's 'book of my year' . . .

This year's 'my book of the year' is The Axeman's Carnival by Catherine Chidgey featuring a perspicacious and charmingly clever magpie. Whoever heard of such a thing?

It's set on a South Island farm and despite not being from a farming background, it rings true for me – maybe it was Denis Glover's poem The Magpies, or a visit to a derelict farm featuring eerie, souging macrocarpas in my childhood - who knows but I felt like I knew this land and these birds.

"We are here, and this is our tree and we're staying, and it is ours and you need to leave and now."

Tama is just a helpless chick when he is rescued by Marnie, "If it keeps me awake," says Marnie's new husband Rob, a farmer, "I'll have to wring its neck."

Part trickster, part surrogate child, part witness, Tama the magpie is the star of the story. While what he says is mostly nonsensical and often very funny, the tale he tells weaves a disturbing story of human behaviour and particularly on Marnie and Rob and their marriage.

In the macrocarpas his father warns Tama of the wickedness of humans while inside the farmhouse, Marnie confides in him about her violent marriage. The more Tama sees, the more the animal and the human worlds bleed into one another as the story moves inexorably towards its dramatic conclusion: the annual Axeman's Carnival.

Chidgey's prose is lyrical and poignant, capturing the essence of both the natural world and the complexities of human emotions and behaviour. As Tama navigates between the worlds of humans and birds, he becomes a catalyst for change in the lives of those around him.

The Axeman's Carnival is a great novel for anyone seeking a memorable read. Perhaps especially for readers who rarely choose fantasy – after all, the story is sadly as old as time and talking magpies are real, we all know that.

A dazzling portrayal of humanity and the natural world that thankfully balances violence and humour, Catherine Chidgey's mastery of language and narrative will leave readers captivated.

Reviewed by Hilary Clifton





the playhouse

August Happenings

**Friday 2nd and 9th
RIBS NIGHTS**

**Sat 3rd
GASTBY NIGHT
With the Nelson Big Band**

**Sat 10th
SUN CITY SOUL**

**Sat 17th
DRESS LIKE A CELEB PARTY
with the Crayons**

**Fri 23rd
PAUL MADSEN'S
QUEEN BEEGEE'S TRIBUTE**

**Sat 24th
Harmony Hunters**

**Sat 31st
THE NOMAD +
MC Antsman from Rhombus**

PANZ

Nelson Area - Pastel Artists of New Zealand – now has a group who meet once a month on a Saturday morning, to cater for those pastel artists who are full time employees. Below is some helpful information.

You do not have to be a PANZ member. We are a casual “drop-in” painting session for artists, so come if you can. We’ll always be happy to see you. No instruction. We paint, chat, and help each other out when asked. It’s a lovely way to spend a morning. Please bring a drop cloth for the table and floor if needed. We’re in the Greenmeadows Kererū room (downstairs) from 9am - 1pm. \$10 to help cover the room costs. Cash or bank transfer on the day.

These are our upcoming dates: Aug - 10th - (please note this is the 2nd Saturday, not the 3rd. Rugby has taken over the 17th!) **Sept 21st, Oct 19th and Nov 16th** .

Contact Lyse Beck lyse@lysebeck.com

Our Tasman group meet at the Māpua Hall **each and every** Tuesday morning 9am to noon and if you would like to try using pastel as a painting medium, we have papers and pastels for you to use.

We have a guest speaker each month and this month is John Parson, a PANZ member speaking to us about his art journey. He grew up in Montreal, Canada, where he attended art school and in later years had an art gallery. His world travels brought him to Queenstown where he spent many years doing street portraits. Last year he returned from Canada to settle in Nelson. He's had a long and varied career in art. His Facebook page shows paintings of the natural world completed on birch bark, animals, underwater life, waterfalls, garden life, an imaginary magical world and a 'curtain series' We are looking forward to it.

Do call in if you're passing, we always welcome visitors.

Contact Margie Bramley margbramley@gmail.com

Ruby Coast Running Club

Now we are past the shortest day it is starting to get slightly lighter at our regular Thursday evening 5km events. This is a very welcome development. However, it is still dark at the end of the run, so it is still important to remember to wear lights and/or headtorches and reflective clothing for a week or so yet. Despite the cold and dark conditions, we have continued to have really good numbers on Thursday evenings, which is great to see.

We have also had good attendance at a couple of recent local events.

The Monaco Mid-Winter Marathon is always popular with our runners and this year was no exception. Its popularity lies in its format and is also due to its location. The event involves a 42km marathon course which, as well as solo runners, includes options for relay teams of either 2 or 4 runners to cover the distance. This means that there is something for all runners.

The course itself is very scenic. It starts at The Honest Lawyer, and first takes in a loop of Monaco before following the Great Taste Trail out to the beachfront at Rabbit Island. It then follows the Great Taste Trail back to The Honest Lawyer. This is an ideal spot to enjoy some refreshments while you wait to cheer your team members across the finish line and to socialise afterwards.

We had runners entered in all categories (apart from the marathon walk) as follows: Solo marathon: Graeme, 2 person mixed relay teams: RCRC 'a Wing and a Prayer' (Eddie and Debbi) and RCRC 'The Young and the Old' (Mark and Sarah); 2 person male relay team: 'Forest

Chumps' (Gus and Steven); 2 person female relay team: 'RCRC Wāhine' (Christine and Niki) and 4 person relay team: 'RCRC Awesome Foursome' (Kerry, Vincent, James and Faye).

It was a perfect winter's day for the event. Everyone ran really well and had a lot of fun. A number of our runners even achieved personal best times as well. Well done everyone. Also, special congratulations to team RCRC

Wāhine who were the second placed 2-person female relay team.

We also had a good group of runners take part in the Motueka Sprig & Fern 10 km. First the Honest Lawyer and now the Sprig & Fern? There seems to be a theme with these recent events. Needless to say, after the event our runners also enjoyed the refreshments and socialising at the prizegiving at the Sprig & Fern. All very well deserved.

Although none of our runners received top placings, everyone did really well.

If you would like to join our regular Thursday 5km event, we meet each week in front of the playground by the Māpua Hall. We start at 5:15pm for walkers and runners that need more than 30 mins to complete 5km, and 5:30pm for everyone else. You are welcome to bring your four-legged walking or running buddy – we just ask that you please join with 5:15pm walkers and runners. There is no need to register in advance – just arrive a few minutes beforehand to sign in and to listen to the course briefing.

You can also find us on Facebook: Ruby Coast Running Club.



TRADITIONAL CHINESE MEDICINE
& ACUPUNCTURE



ACC ACCREDITED

Andrew Perzigian, MSTCM

022 193 9076

nzacupunctureworks@gmail.com

www.acupunctureworks.co.nz

teCora
69 Aranui Road, Mapua

Tasman Comtech
35 years in the telecommunications industry



HOME & BUSINESS
all areas of Telecommunications
servicing the Nelson region

- Telephone lines
- Data Cabling
- TV aerials
- WIFI Networks
- Satellite TV
- Fibre Networks
- Internet Cabling PABX Systems

03 5444203 | 027 5444203 | www.tasmancomtech.co.nz
17 Poutama, Richmond 7020

Yoga with Martin

Mapua Hall

New! Beginners/Recovery:
Tuesday, 6.00 – 7.00pm

General: Friday, 9.15 – 10.30am

yogawithmartin.nz

027 614 5936




Motueka Appliance Repairs

Specialising in Home Appliances
In Mapua Regularly

Call Dan **022 4568 068**

architecture studio | mapua

- Warmer
- Drier
- Healthier



Simone Wenk
Reg. Architect (Germany), LBP Design 2 (NZ)

03 540 3282 / 021 1049 039
simonewenk@xtra.co.nz

Shed 4, Mapua Wharf
www.architecturemapua.co.nz

Gavin Lambert

Master Painter



DECORATOR Master Painters

CRAFTSMAN PAINTERS & DECORATORS

GAVIN LAMBERT (OWNER)

Ph: 03 540 2748 Cell: 021 476 318
Email painter@scorch.co.nz / 26D Jessie St, Mapua, 7005
www.lambertdecorators.co.nz

NZ TEXTILE EXPERIENCES




Bespoke textile art, fibre craft & artisan workshops

- Screen Printing
- Contemporary Felt Making
- Stitch Embroidery
- Transformative Textile Materials
- Harakeke - NZ Flax Weaving
- Eco Dyeing
- Creative Book Binding
- Slow fashion
- And more...

Workshops held in artists' studios or local venues.

LIMITED SPACES, book your workshop today @
nztextileexperiences.com
or email info@nztextileexperiences.co.nz

Facebook, Instagram, LinkedIn, Pinterest icons

Mapua Wharf, Mapua

COOL STORE

GALLERY

NZ Art and Design Store

Open Daily - 10am-5pm

info@coolstoregallery.co.nz
www.thecoolstoregallery.co.nz

8 Aranui Road, Māpua Wharf
Phone: (03)540 3778

@thecoolstoregallery

Māpua Tennis Club

New season starts 1 September 2024. Māpua Tennis Club is thriving with the new astro courts and new lights getting lots of use since their completion at the end of 2023. As we look towards the new season we welcome new members of all ages. It's a great way to meet people if you are new to Māpua and we cater for all ages and levels.

Courts can also be booked on a casual basis on the website for non-members. There is free access on Thursday and Sunday afternoons from noon to 5pm.

Now that we have lights we have begun a Wednesday night competition with five teams from Māpua and two from Upper Moutere. Lots of fun and excellent matches.

There are opportunities for social tennis, coaching with our club coach, Vanessa Mairs, and also Māpua teams taking part in competitions locally or around the wider region. There is information on the Māpua Tennis Club website or contact us at mapuatennisclub@gmail.com if you have any questions.

We look forward to hearing from you!

Groundhog Day

Are you prepared for 6 more weeks of winter?

At Perry's Auto we make sure you're prepared for a bit more bad weather before spring arrives:

- Check oil & fluids
- Check battery
- Lights working
- Wipers functioning
- Screenwash full
- Tyre pressures & treads



NPD Fuel Cards • SuperGold Cardholders welcome
 Repair & maintenance workshop • Electrical & air con work
 24 hr Breakdown: Call AA if you are a member or 021 540 286
T: 03 540 2866 | E: perrys.auto.services@xtra.co.nz
www.perrysautoservices.co.nz | Find us on Facebook @perrys9829



DOG WALKING SERVICE




Tasman Village
Mapua
Motueka
Riwaka

CONTACT US
027 360 6043
www.dogalmighty.nz




Our latest news & adventures



Unlocking the hidden power of Play

In today's increasingly digital world, where screens dominate our daily lives, the simple act of playing outside holds more significance than ever for children. Outdoor play isn't just about fun and games—it enhances physical health, stimulates cognitive development, nurtures social skills, and fosters a deeper connection with the natural world. At WIO, we see this benefit every day in our work with children and youth from all walks of life. As parents, educators, and caregivers, we can play a pivotal role in providing opportunities for children to explore, play, and learn outdoors. *Read more on our website in our recent blogpost.*

WIO Quiz Night - 5th Sept

Mark your calendars! The Whenua Iti Quiz Night is taking place at the Sprig & Fern Motueka on Tuesday 5th September. Local prizes up for grabs. Bring your whanau or your work mates along for a fun night, with proceeds supporting WIO. Contact Margaret at margaret@wio.org.nz if you're a business and you'd like to sponsor a quiz prize!



Play promotes physical, social & emotional wellbeing

Local students learn Enviro Sustainability

Our Environmental Sustainability students were instrumental to a local trapping and planting project in the Moutere Catchment. In consultation with landowners Phillip and Jenny Leith, the students were given 'free rein' to import a new trapline and also plan and design the planting project, selecting suitable native species for the location. 600 native seedlings were planted, sourced from the WIO Community Nursery. Harriet from Motueka High School, said she liked, "The practical experience that you don't get in the classroom or on a tablet. There're so many different ways of learning which are fun too." *Visit our website to read more about this project and our FREE Trades Academy programmes.*

Shortlisted: Best Places to Work NZ

Whenua Iti has been shortlisted in the 2024 Best Places to Work NZ awards! We'd like to thank all our staff who contribute to the creation and maintenance of such a positive workplace culture. Work is inspiring when you're supporting youth in the outdoors!



Enviro Sustainability students planting at the Leith property

Māpua Craft Group report

Due to illness, appointments and holidays, we were unable to meet on the 5th of July.

On the 19th of July, we shared the many useful craft items that were very kindly donated to the Group by our long-time member, Nita. We all thank you so much for these most generous gifts that will inspire us through winter and beyond.

We felt as if Christmas had come as we all took home treasures, made donations to other groups, and charity shops.

Our meetings for August will be on the 2nd and 16th from 10am till noon in the meeting room at Māpua Community Church. You are most welcome to come and join us - all we ask is a "Koha" of \$3, your companionship and ideas to share whilst enjoying tea or coffee with us.

Below is a photo of some of Nita's kind donations!

Barbara Ph: 03 5403901



The Write Bias

News from Māpua Bowling Club

The Māpua Bowling club may be closed for play during the winter months, but the work still goes on for the newly elected board: the bowling green still has to be maintained to look good for the start of the season, planning of matches for the coming season, organising activities to help bring in money for the club to cover expenses (which can be extensive) and running the winter socials.

The winter socials start at 5pm every first and third Friday of the month. These are great to help members keep in touch when the club is closed for play. It is an opportunity to chat, play indoor bowls, have a game of cards or pool and enjoy a homecooked meal at reasonable prices. Of course, the bar is open for drinks.

Bowling does not stop for some members as the Motueka Bowling club artificial green is open during the winter and available for those who are brave enough to enjoy the winter sun.

Opening day for the season has been planned for **21st September** and all new members are welcome.

Please contact Di Blanchet on 03 540 2627 for details about bowling, coaching, friendship group or clubhouse hire.

Julie Booth

**The
Massage Studio
Mahana.**

Relaxation, Deep Tissue, Hot Stones, Pregnancy.

After 22 years, Lynda has sold her Massage Therapy teaching business and is seeing private clients again.

The Massage Studio is warm, private, and self-contained. \$90.00 per hour (hands-on time).

Ph 027 222 1491 for appointments.

**MAPUA
AUTO CENTRE**
"YOUR AUTOMOTIVE SPECIALIST"

Fully Equipped Automotive Workshop | All Makes & Models | 6 Courtesy Cars | W.O.F.

20 WARREN PL, MAPUA, NELSON 7005 | PH 03 540 2180

Chelle the Seamstress

Clothing alterations, dressmaking
Repairs, cushion covers / squabs
Curtain shortening
by appointment

11 Korepo Rd, Ruby Bay
021 2086 286
chelle.evanson@gmail.com

Tasman Bay Chiropractic
64 Oxford Street, Richmond
03 544 4554 Monday-Saturday

tasmanbaychiropractic.co.nz

Referrals, families and all new patients welcome
Visit our website or call for more information

Keeping you in the game since 2002



REDWOOD BUILDING Services Ltd

- Design and Build
- New Housing
- Additions/Renovations
- Light Commercial
- Farm Sheds
- Any Location

f 021 154 6040 
 E: redwoodbuildingservicesltd@gmail.com

Our in House Design Service Provided by:

L K R BUILDING DESIGN

- Residential Design
- Commercial Design
- New Builds & Renovations

f 022 127 0321 
 E: lkrbuildingdesign@gmail.com

Shone & Shirley
FUNERAL DIRECTORS
 EST 1862
 FAMILY OWNED & OPERATED



Caring for our community for over 160 years

Our family caring for your family

Personal | Professional | Affordable

shoneandshirley.co.nz
03 5465700 (24 hours)

Māpua & Districts Community Association (MDCA)



A short obituary written by Elena Meredith, in memory of local stalwart Hugh Gordon, was read to the meeting by executive member Bruno Lemke. Hugh had been a very active member of MDCA for many years particularly during the time the highway bypass was being considered and then later until he was well into his 90's. His input into Māpua's development has been significant.

The matter of the Post Office agency closure both here and in Upper Moutere was raised, having already been discussed by the Executive. It was resolved that the MDCA, in conjunction with the Māpua District Business Association would write to NZ Post expressing our concern that the closure of the agencies would have a significant negative impact of some key services essential for sectors of our community who would now be required to travel to Motueka or Richmond for not only such activities as posting a letter but also more important social service bureaucratic processes.

The MDCA has invited our local MP Maureen Pugh to a **Question and Answer** session at the Hall on **Wednesday August 14**. Focus will be on how the change in government will impact Māpua and its residents, with questions posed to Ms Pugh by the meeting chairperson. Questions will need to be submitted in writing to the MDCA at info@outmapua.org by 8 August

While much work has already been completed on the new MDCA constitution, key issues around such matters as membership and society objectives need further consideration. Thus the new constitution will not be presented to members until after the AGM.

Finally, association members are reminded that the MDCA **AGM** will be held at 7pm on **Monday August 12** at the Māpua Hall. For nominations for executive positions please contact the secretary at info@ourmapua.org. Similarly, annual membership subscriptions are due as of July 1 and can be paid by direct credit as per the process that can be found at <https://www.ourmapua.org/join-us/uj>



Melissa Russ, RN
Appearance Medicine Nurse Specialist

- Anti - Wrinkle Injections
- Micro Needling
- PRP & PRF
- Dermal Filler
- Prophilos

Mapua Health Centre
Tuesday Afternoon

Phone or Text 02041444988 to book an appointment
www.thebeautynurse.co.nz



Moutere Hills RSA Memorial Library Māpua Community Library

Come along and view our beautiful July / August Exhibition by Joyce and Richard Bullock.

Joyce says that her husband Richard had started painting prior to leaving Palmerston North in 2006. Their neighbour, well known Māpua artist Beth Meikle, along with two or three others joined up to paint in Beth's garage each week. Richard was happy to join them one morning each week.

Anything, she said, for him to escape the renovations at their house!!

The numbers grew too big for the garage, so it was decided to move to the Bill Marris room in the Hall. The painting group continues to meet every Thursday from 9 till noon. Richard continued to paint for a couple of years, whilst Joyce joined in for a year.

As a raw beginner she always appreciated the helpful advice contributed by able artists. She notes that the notice in the Coastal News reads: "help each other in a social environment".

Joyce's three flower paintings, and Richard's "Fyfeshire Rock" and the "Sailing Ship Arrives" are for sale at \$150 each. The cash will go towards their granddaughter's fund to attend Outward Bound.

Joyce is a volunteer at Māpua Community Library, and can be contacted at 027 528 1374

Large print books: we have also received a good selection of new Large prints books from the Richmond Library.

Helen Jeffery



MĀPUA HALL MAKERS MARKET

Support Local • Buy Local • Love Local

Sunday 18 August 2024 from 10am – 3pm

It is that time again. The Māpua Makers Market is an important fundraiser for our community owned and community operated Māpua Community Hall.

The Māpua Makers Market is a contemporary craft fair held three times a year in the Māpua Hall. This Market has been running for many years and was the brainchild of local artists Lynn Price and Sally Reynolds. They wanted to have an indoor market that emphasised art and craft. Their focus was on handmade, good quality products, made with love, by talented makers. Over the years the Market has proved to be highly successful

Forty stall holders will showcase "top of the south" talent, the care, skill and attention which goes into making these handmade articles so unique and special. Goods on offer will include jewellery, glass art, natural care body products, woodware, clothing, garden art and a wide range of homewares.

Please check the Facebook site for more information:

www.facebook.com/MapuaHallMakersMarket

You'll also be able to sit down to enjoy coffee, tea and baking in our café.

The Māpua Makers Market includes many stall holders who only sell here, making this market truly unique and well worth a visit. The indoor market will be held rain or shine.

Mahana Electrical

All servicing, repairs & installations.
Domestic, commercial & rural.

Phone Simon: 021 994 306

SUMMIT

GORDON WEBB

Top Salesperson 2007/2008/2009/2010
Top Office 2015/2019/2020/2021/2022/2023
in Summit Real Estate MREINZ

Having grown up in this fantastic little village and seeing it blossom and thrive, I truly believe that my team and the passion and knowledge I have for the area will get you the very best results.

'A Good Deal Better'

Gordon Webb
Residential & Rural Branch Manager
021 540 241 | 544 2900
gordon.webbesummit.co.nz

Garry Simkin Plastering

For all Interior Plastering
027 226 1722

Noticeboard

Wanted to rent: mature couple seek accommodation from 20 Jan to 2 March 2025 approximately. Māpua Motueka Tasman area. Reply whitfine@yahoo.com

Māpua Friendship Club indoor bowls, first & third Mondays, at Māpua Bowling Club rooms. Bowls at 2pm, followed by "bring a plate" afternoon tea. \$3 door fee. We are not a competitive bunch and have lots of laughs. For more information contact Val 540 3685

Motueka Lighthouse Spiritual Awareness Group meets last Thursdays. Insightful presentations & workshops. Motueka Community House, Decks Reserve. Donations Appreciated. All welcome. Thurs 29 Aug 7-9pm. Contact angel3000.h@gmail.com or facebook: lighthousemotueka

Nelson Branch RNZAF meets 2nd Saturdays at Phils Restaurant, Club Waimea, Richmond. ex RAF, RNZAF or others with interest in aviation. Contact: John Bethwaite, 035476634 or Trevor Squires, 039706644. Meal \$25.

Motueka Tennis Club welcomes new members, all ages & abilities. Social Tues & Thurs 9:30-11:30 am & Sunday 2pm. Junior & Private coaching. Info: Kath 0275800108 or motuekatennisclubinc@gmail.com

Craft Group: please check with Barbara or Val that meetings are going ahead.

Stamp & Coin collections in Māpua/Ruby Bay & the Moutere evaluated & purchased. Nick Ferrier 021 688243

Pastel Artists Nelson: meet Tuesdays 9am-noon, Bill Marris room, Hall. Visitors welcome. Marg: 027 257 1857

Coastal Stringers: Ukulele & guitar group meet Fridays 1-4pm at Bowling Club. All welcome, just arrive & enjoy the singing. Contacts: Colleen 5403010, Diane 5402627.

Māpua Women's Rec Group. Come and join our friendly social walking group. Meet outside Village Mall Thursdays 9.15am. Options for all fitness levels plus activities and social events. mapuarecgroup@gmail.com or just turn up.

Knit & Natter group now at Appleshed: 10am Tuesdays. Contact: Debbi 027 327 4055

Motueka Toastmasters: Speak with more confidence? Meet 1st & 3rd Weds, 6.45-8.30pm, St Johns rooms, Jack Inglis hospital. Visitors welcome. Info Peter 027 7468311.

Re-cycle Printer Cartridges at the library. Volunteers are happy to collect printer & photocopier cartridges and transport to recycling centre. Blue bin in our foyer.

Tasman Golf Club: Mixed Social 9 Holes of Golf. Tee off 9.30am Fridays. Friendly group, all levels very welcome. Cost: \$25 for non-members. Ph: Lyndal 03 5266819, teeup@tasmanclub.com or just turn up at Kina

Ruby Coast Newcomers Social Group: meet new people, make new friends. Coffee 10am last Fridays at Tasman Store and occasional social events. Just turn up. Vivien/Richard 526-6707

Māpua Community Choir: 4 part harmony, no audition necessary, small koha, Māpua Hall 7.15pm Thursdays, enquiries Helen: n-h.bibby@actrix.co.nz

Tasman Dippers: A casual collection of people who enjoy connecting with the open water. Year-round dips or swims in the sea at Rabbit Island. Info: www.tasmandippers.nz

Spinners, Knitters, Weavers: Creative Fibre Group, Māpua Hall, second Tuesdays 10am. All welcome.

Māpua Boat Club welcomes new members. No boat required. Social nights Thursdays 5.30 - 7pm at Club rooms on Māpua Wharf. Raffles, cash bar, snacks, regular guest speakers. To join, contact Secretary, Katrina 0211393945

RSA: Anyone interested in joining Moutere Hills RSA is welcome. No service history required. Catch up & meet new members. Nic Poultney 021 220 3920 or 548-4420

Māpua Art Group meets Bill Marris Room Māpua Hall Thursdays, 9-noon. Paint, draw, help each other in a social environment. All levels, media. \$5 incl morning tea. Tables, chairs, easels provided. mapuaartgroup@gmail.com

MDCA: Māpua & Districts Community Association meets Feb-Dec, 2nd Mondays, 7pm Māpua Hall; info@ourmapua.org

Kids 'n' Koffee Playgroup: Wednesdays 10-noon during term time, at the old church building. 0-6 year olds. Morning tea provided. Gold coin donation. Info: pippie.d@gmail.com

Playcentre: behind the tennis courts at 84 Aranui Rd. Come & play – Mondays & Thursdays 9.30-noon during term time. mapua@playcentre.org.nz

Ruby Coast Running Club: 5k run Thursday nights 5:30pm. Also runs most mornings. Find us on Facebook or contact Debbi 027 327 4055.

Fibre Craft Sunday. Birch Hall, Richmond A&P Showgrounds. Last Sundays 1.30-3.30pm. Learn to spin, knit, felt or weave. \$5 includes tea or coffee. All ages welcome. Richmond Creative Fibre Group: Diane 547-6517 or Karyn 544-9709

Quakers meet at Family Service Centre, Motueka 10am 2nd Sundays. All welcome. Enquiries: Linda 027 447 6435.

Toy Library: extensive selection of toys, puzzles & videos for children 0-5yrs. Māpua Hall Monday afternoons, 2.30-4pm. mapuatoylibrary@gmail.com

Ruby Coast Walking Group meets 9.30am Wednesdays by Tasman Store. Walk 1½ hrs then coffee & muffins back at the Store. All welcome. Fiona: 021 232 6089 for more info.

Motueka Senior Net. Tech for mature adults. Monthly meetings. Help sessions 2x/month. De-mystify technology in a fun & friendly forum. Clubrooms 42 Pah St, Motueka. Seniornetmotueka.org.nz

Coastal Garden Group meets 1pm first Thursdays, Tasman Bible Hall (opp. Jesters). Men and women most welcome to share their love of gardening. Guest Speakers, Workshops, Garden Visits. Info: coastalgarden.group@gmail.com

Sing Your Lungs Out! Free community singing group for anyone with respiratory issues. Morning tea. Singing improves your lung health! 10am Mondays, Te Awhina Marae, Pah St, Motueka. Pip 0274 282 693

Tasman Area Community Association (TACA) 7.30pm last Thursdays (x Dec) Tasman Bible Church. Residents of Ruby Bluffs to Tasman & Kina welcome. Info: Facebook or www.tasmancommunity.org.nz

Motueka Scottish Country Dance Club: Weds 7.30pm Lower Moutere Hall Scout den. No partner needed, dress casual, wear soft flat shoes, beginners welcome. Good exercise, lively music. Contact Fay 021 039 3559 or Alison 0220 363 891.